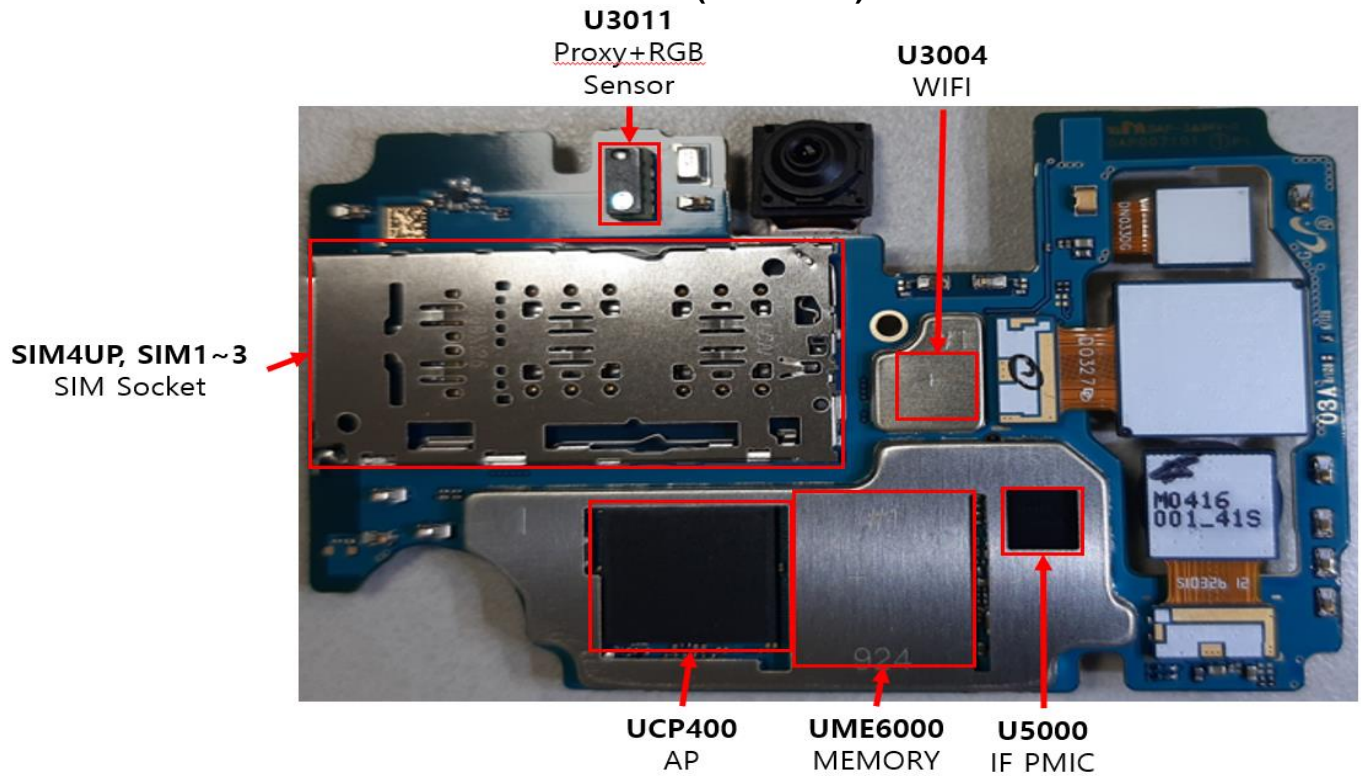


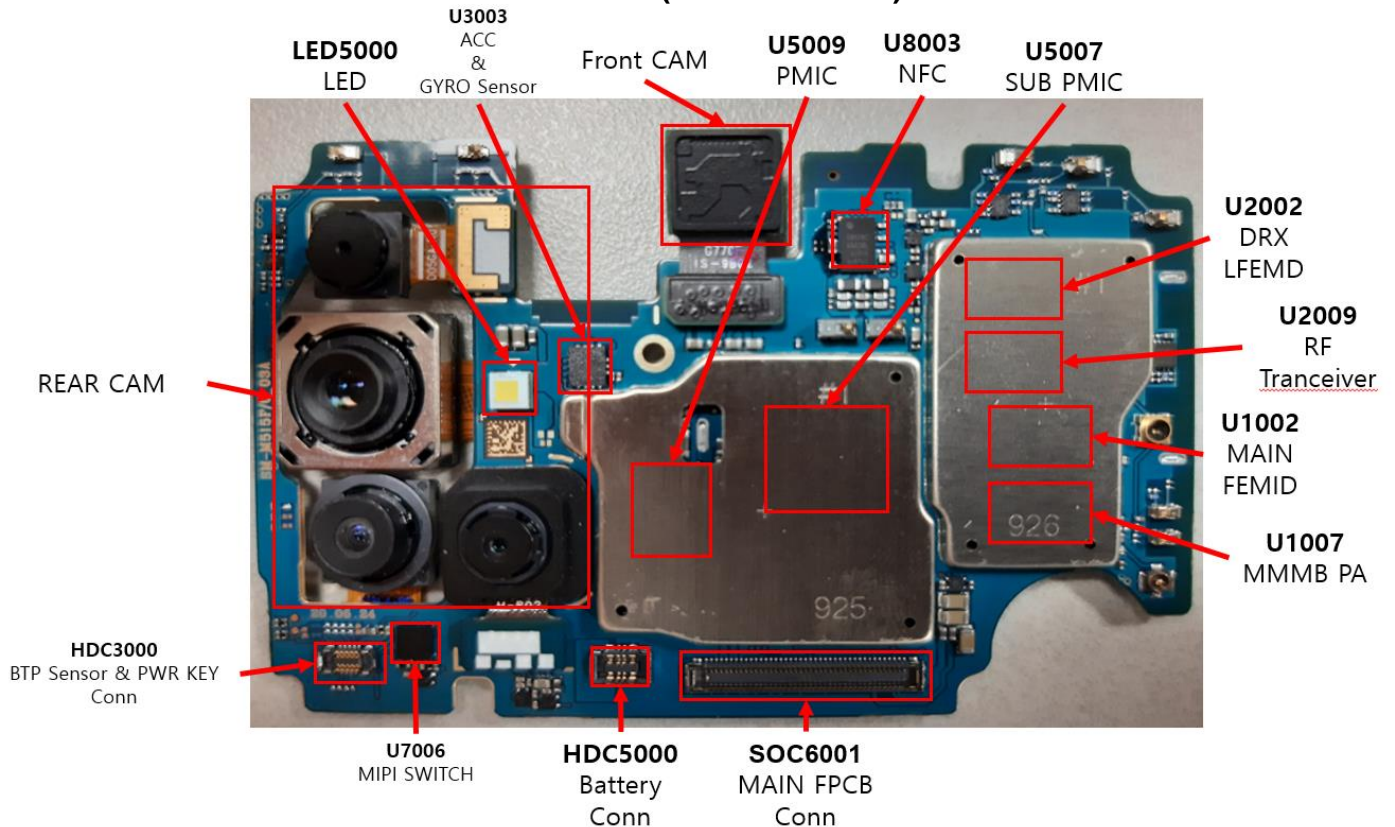
8. Level 3 Repair

8-1. Components Layout

MAIN PBA (TOP SIDE)



MAIN PBA (BOTTOM SIDE)

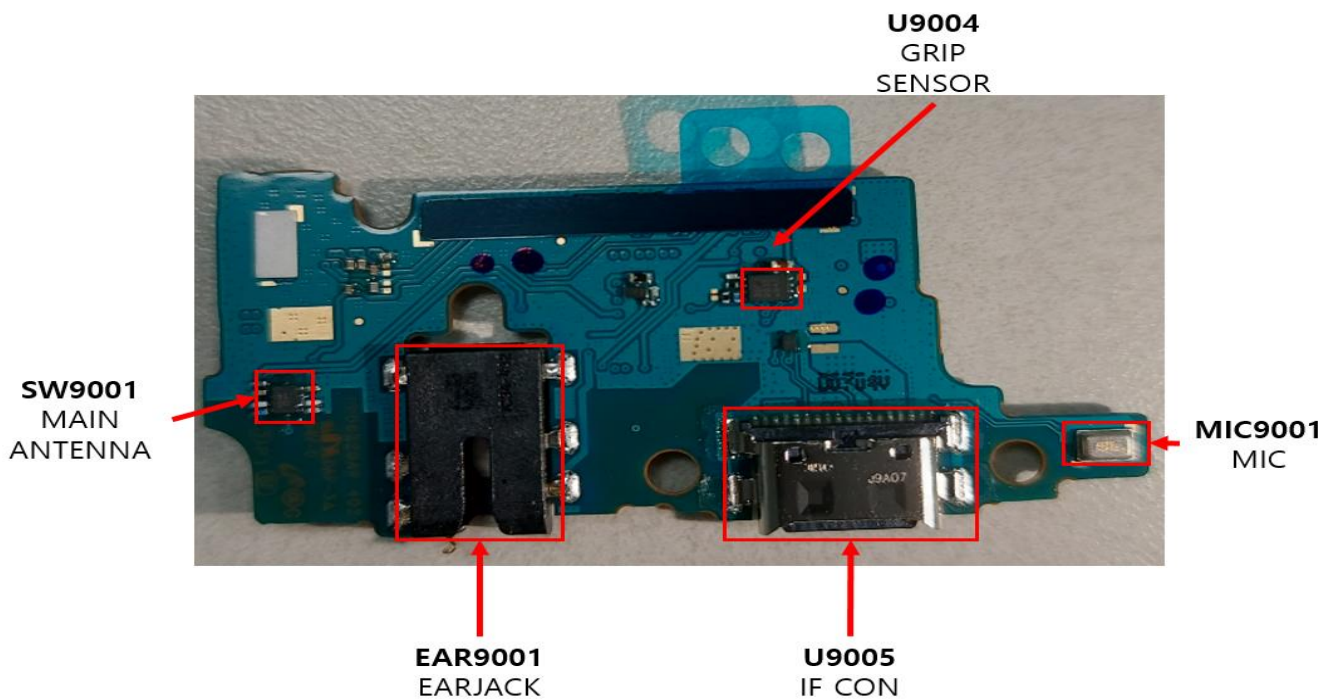


Confidential and proprietary-the contents in this service guide subject to change without prior notice

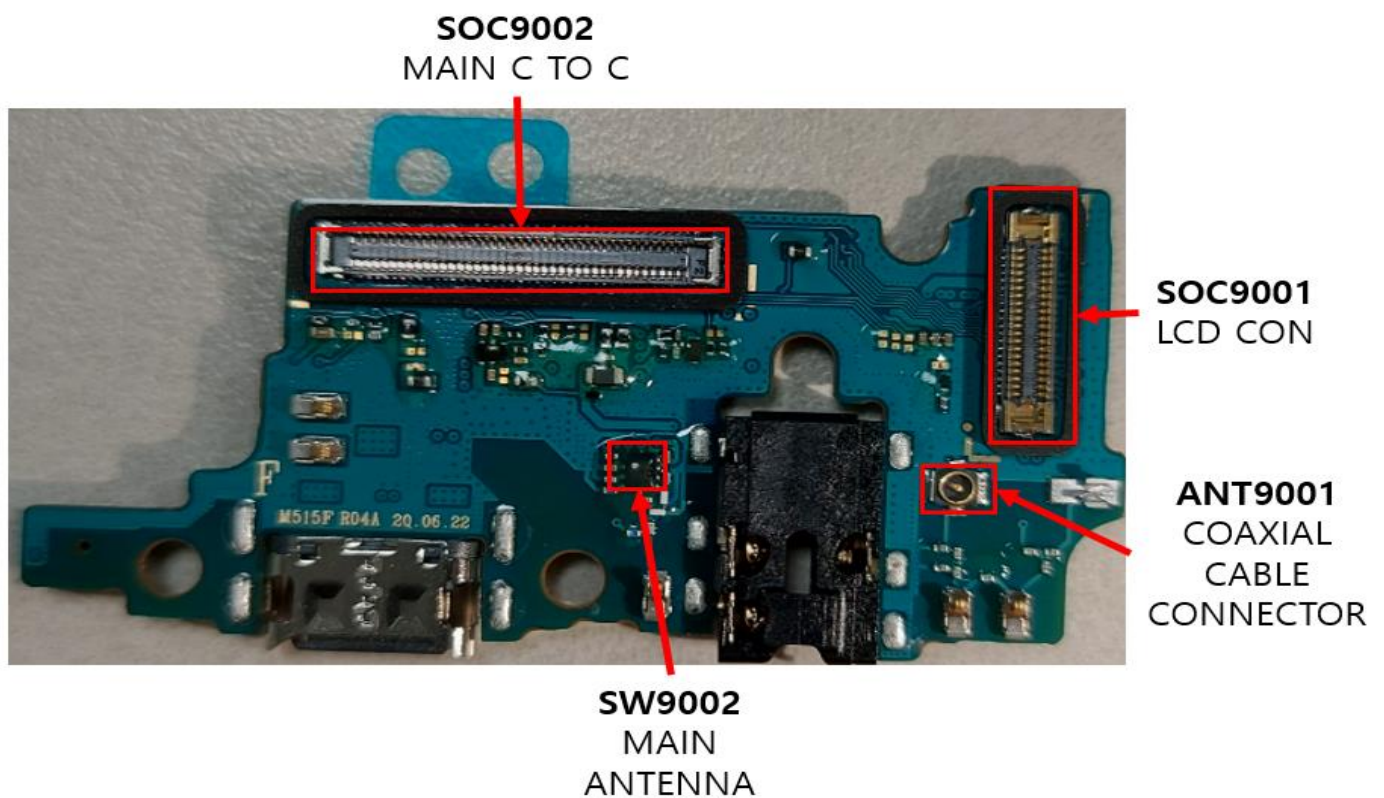
Distribution, transmission, or infringement of any content or data from this document without Samsung's written authorization is strictly prohibited.

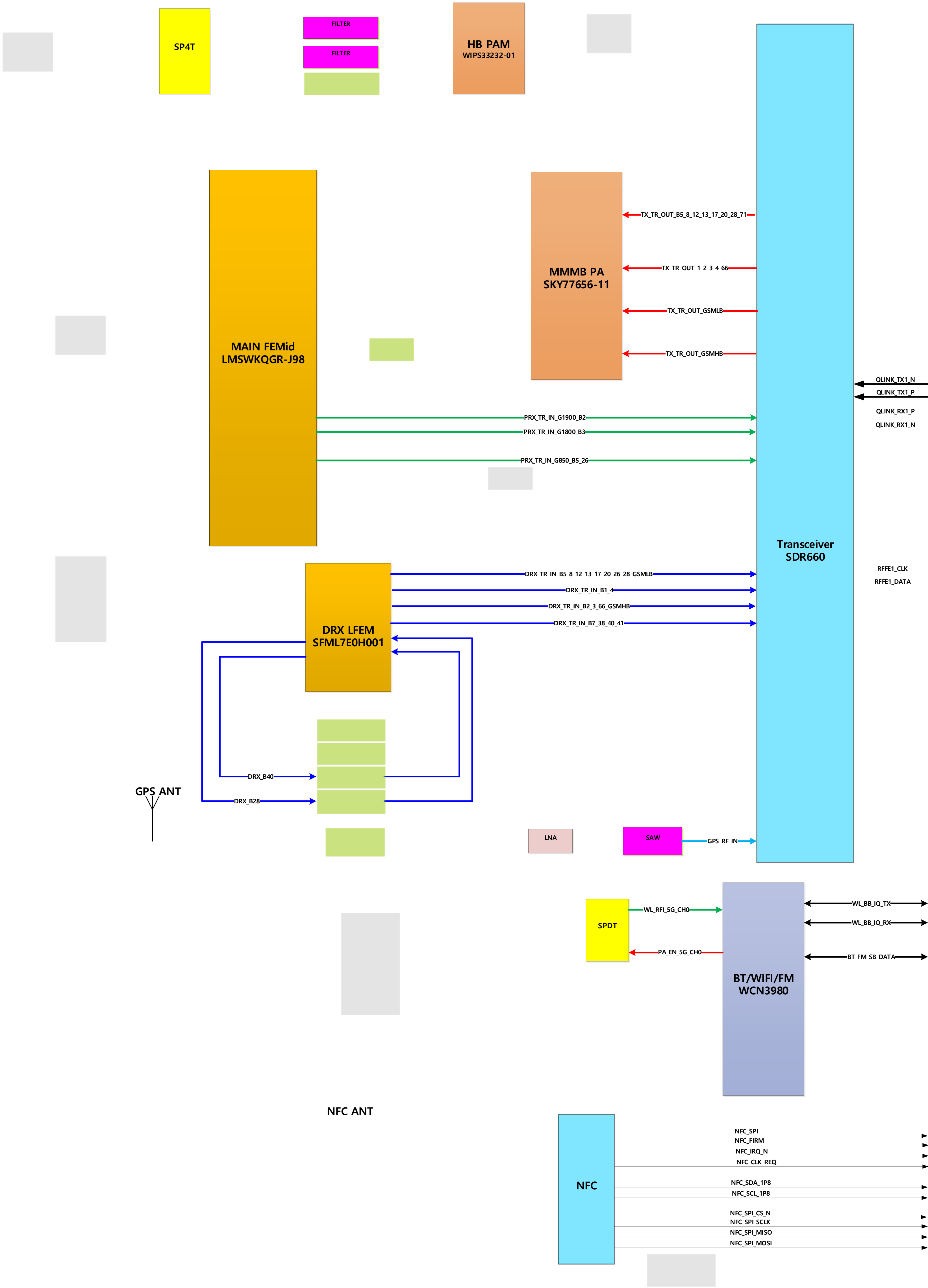
8. Level 3 Repair

SUB PBA (TOP SIDE)

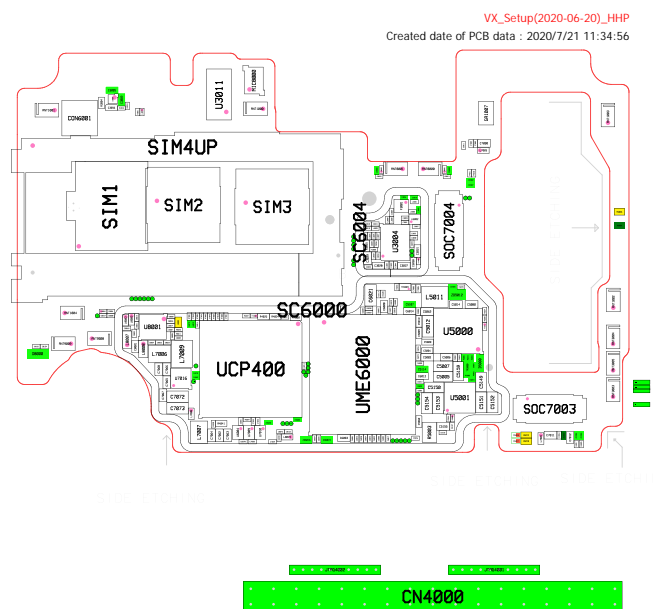


SUB PBA (BOTTOM SIDE)

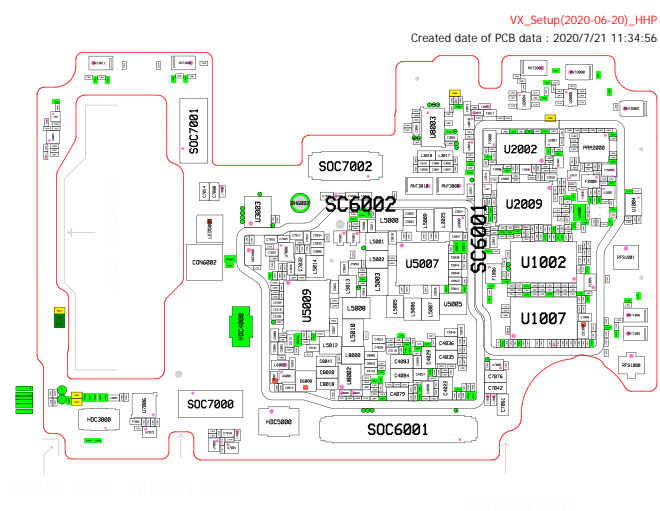




Model :
Revision :
Manufacture Count :
Charge :
Contact :
Date :
Routing :
Resin :

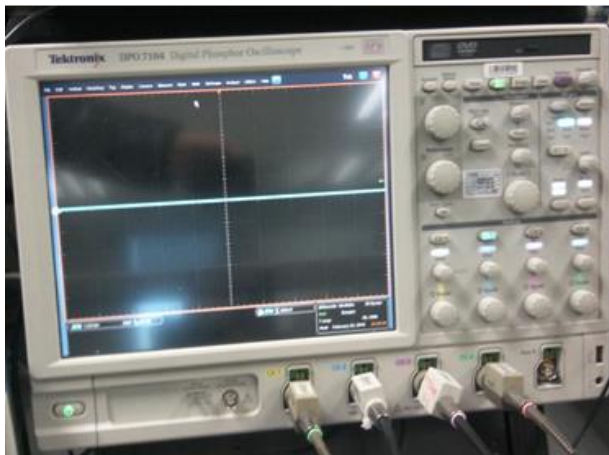


Model :
Revision :
Manufacture Count :
Charge :
Contact :
Date :
Routing :
Resin :



8. Level 3 Repair

8-3. Flow chart of Troubleshooting.



Oscilloscope



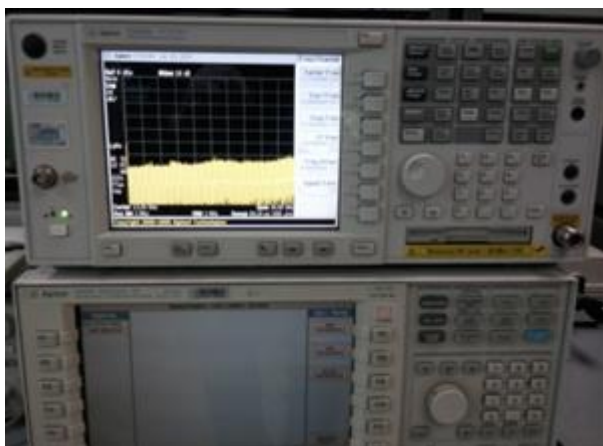
Digital Multimeter



Power Supply



+ driver, ESD Safe Tweezer



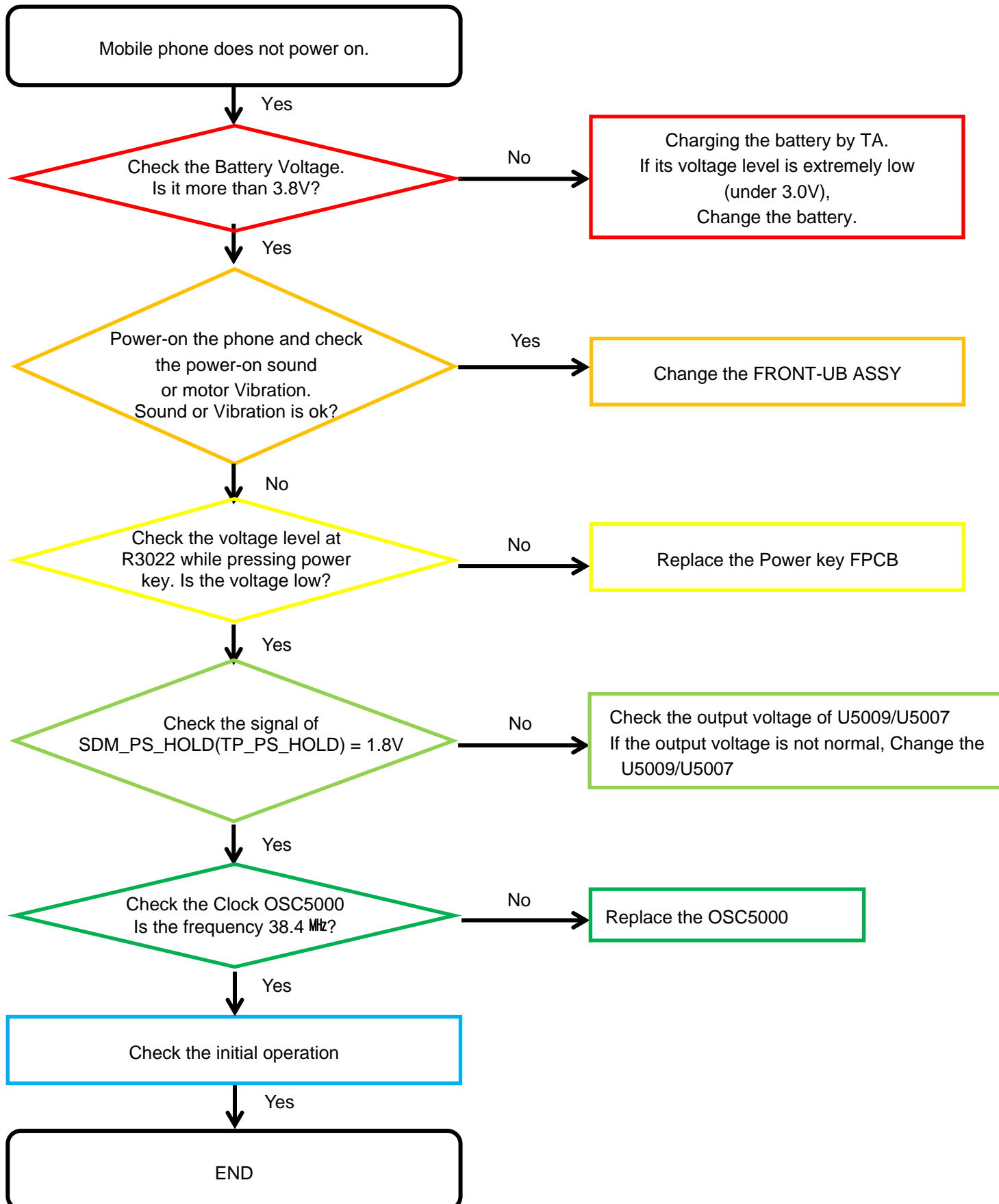
8960 & Spectrum Analyzer



Soldering iron

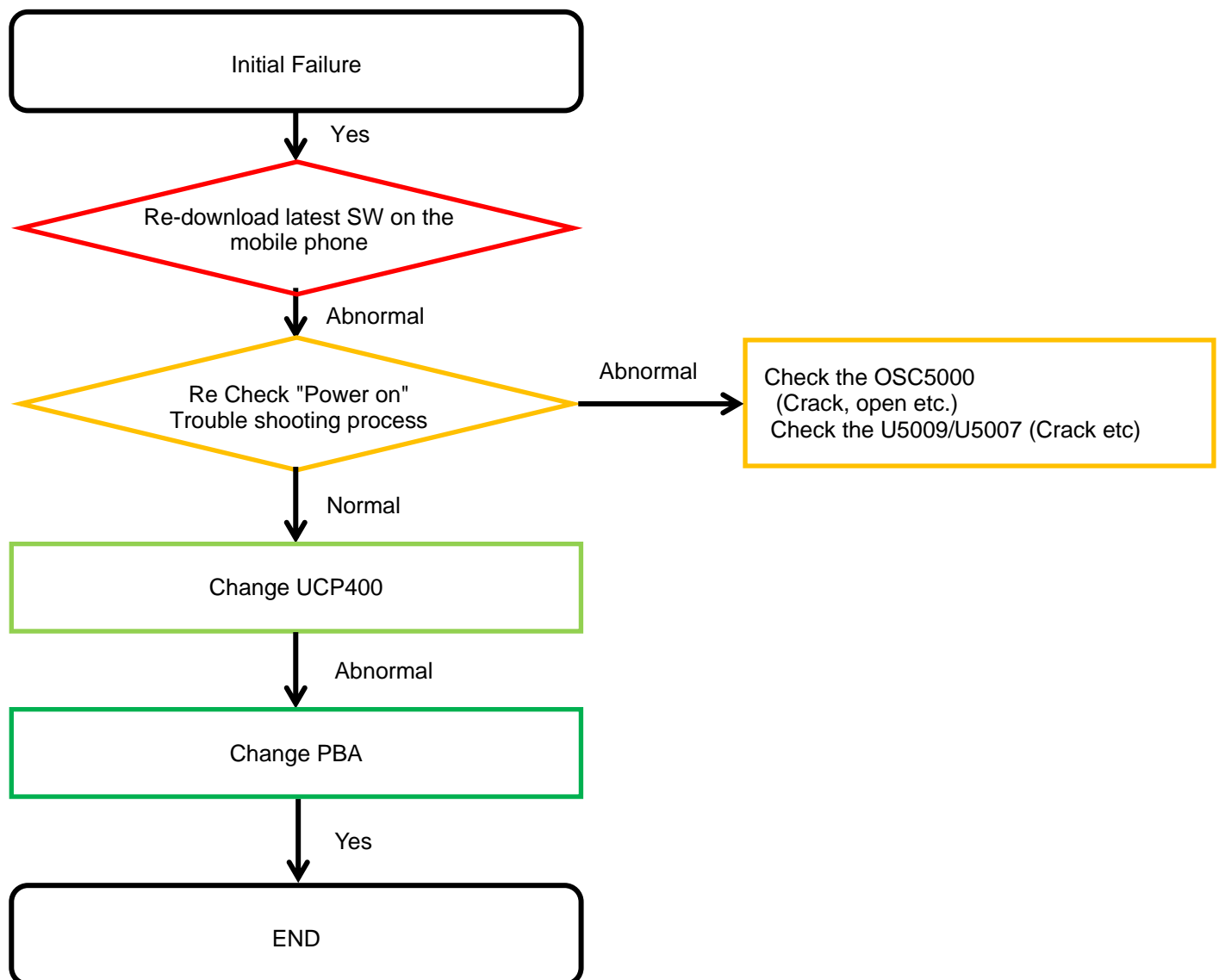
8. Level 3 Repair

8-4-1. Power On



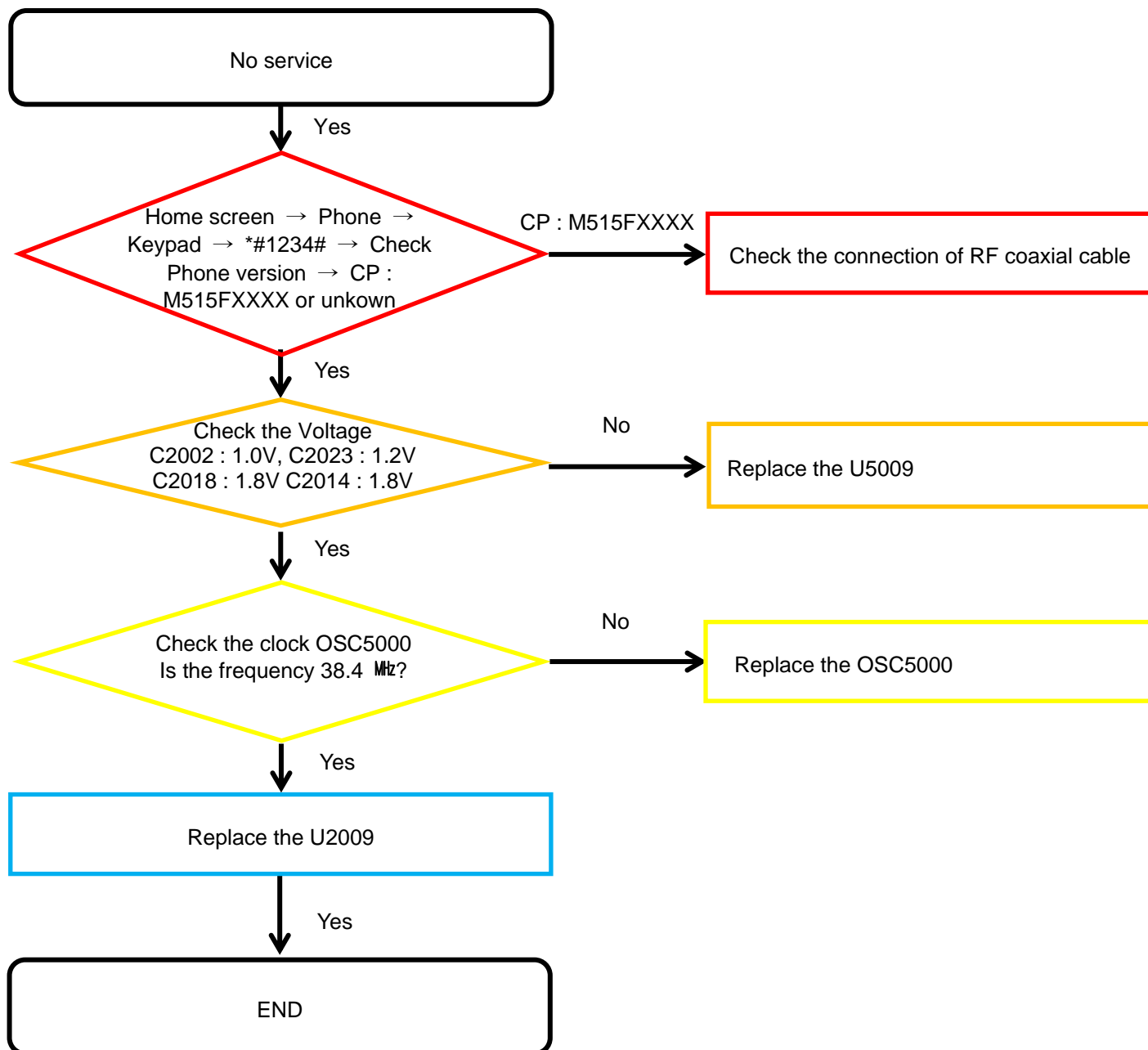
8. Level 3 Repair

8-4-2. Initial



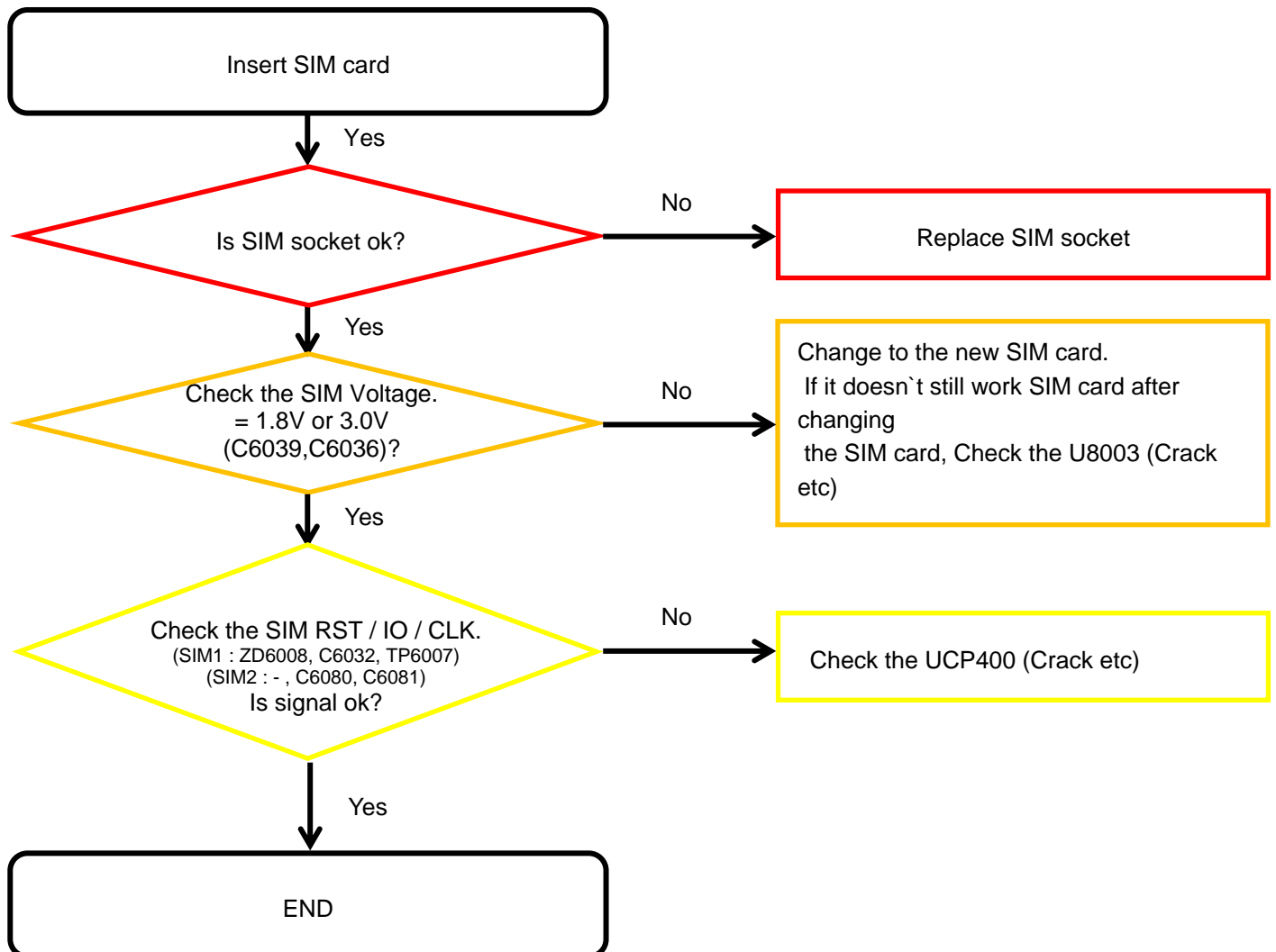
8. Level 3 Repair

8-4-3. No Service



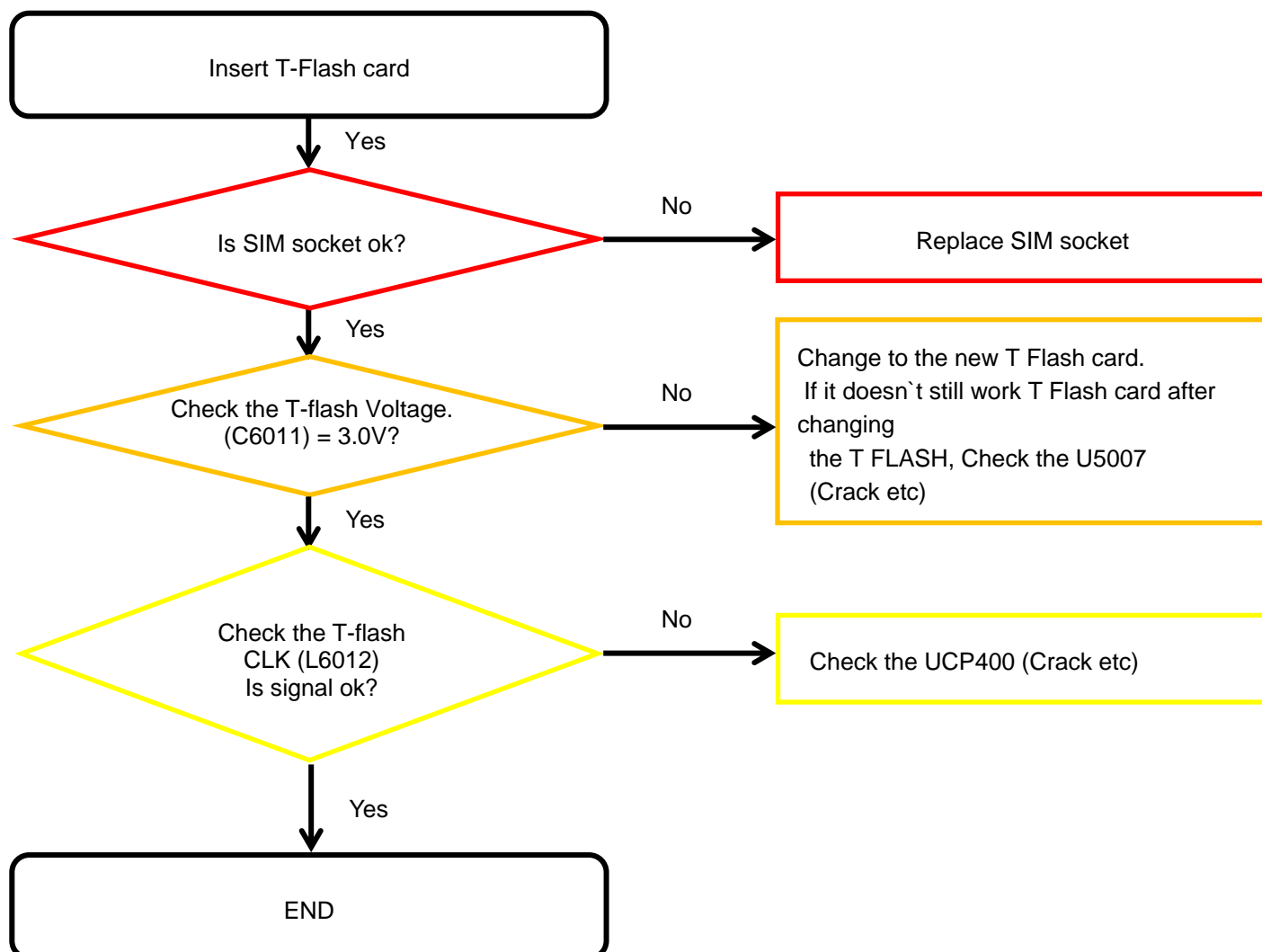
8. Level 3 Repair

8-4-4. SIM Part



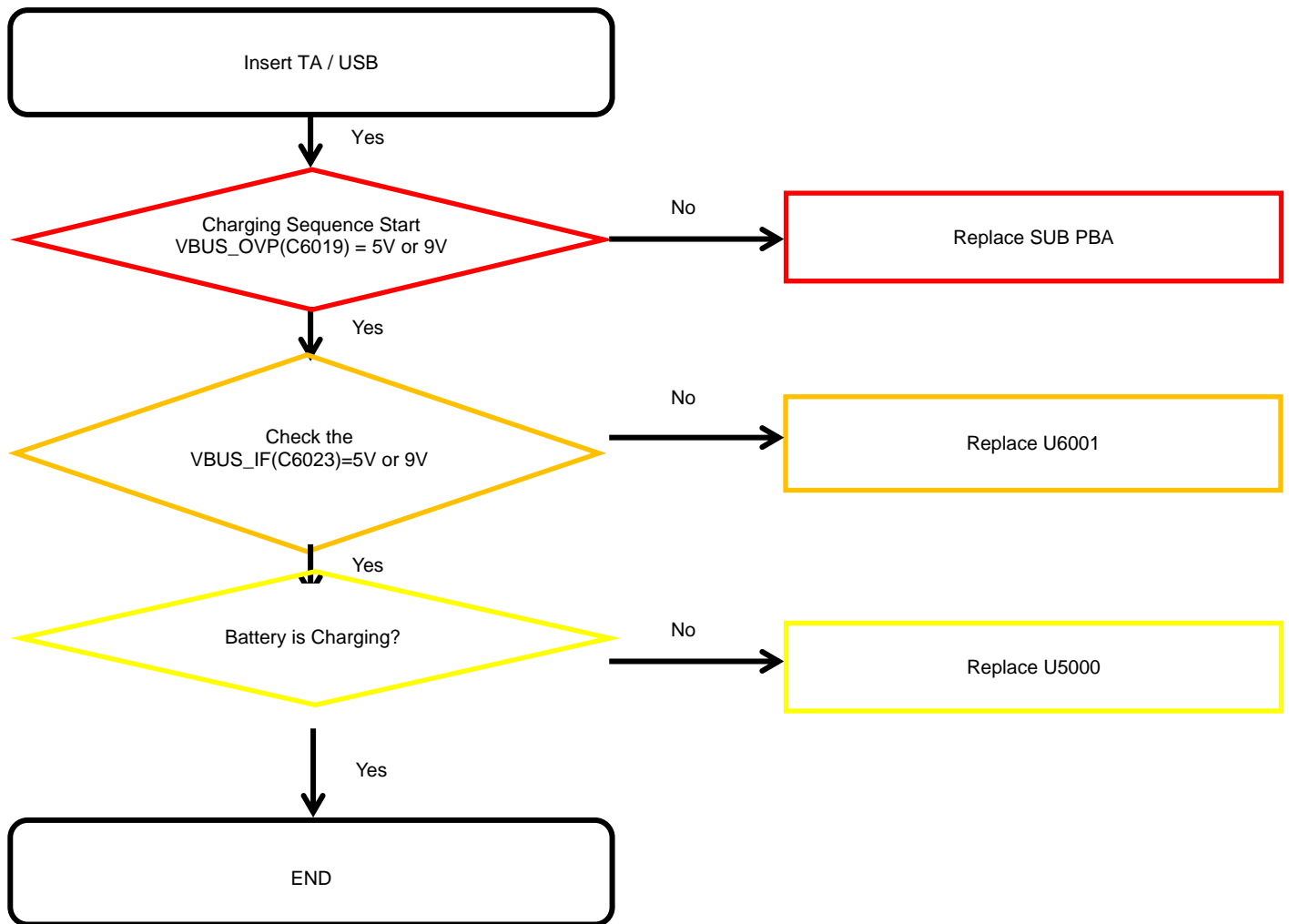
8. Level 3 Repair

8-4-5. T-Flash Part



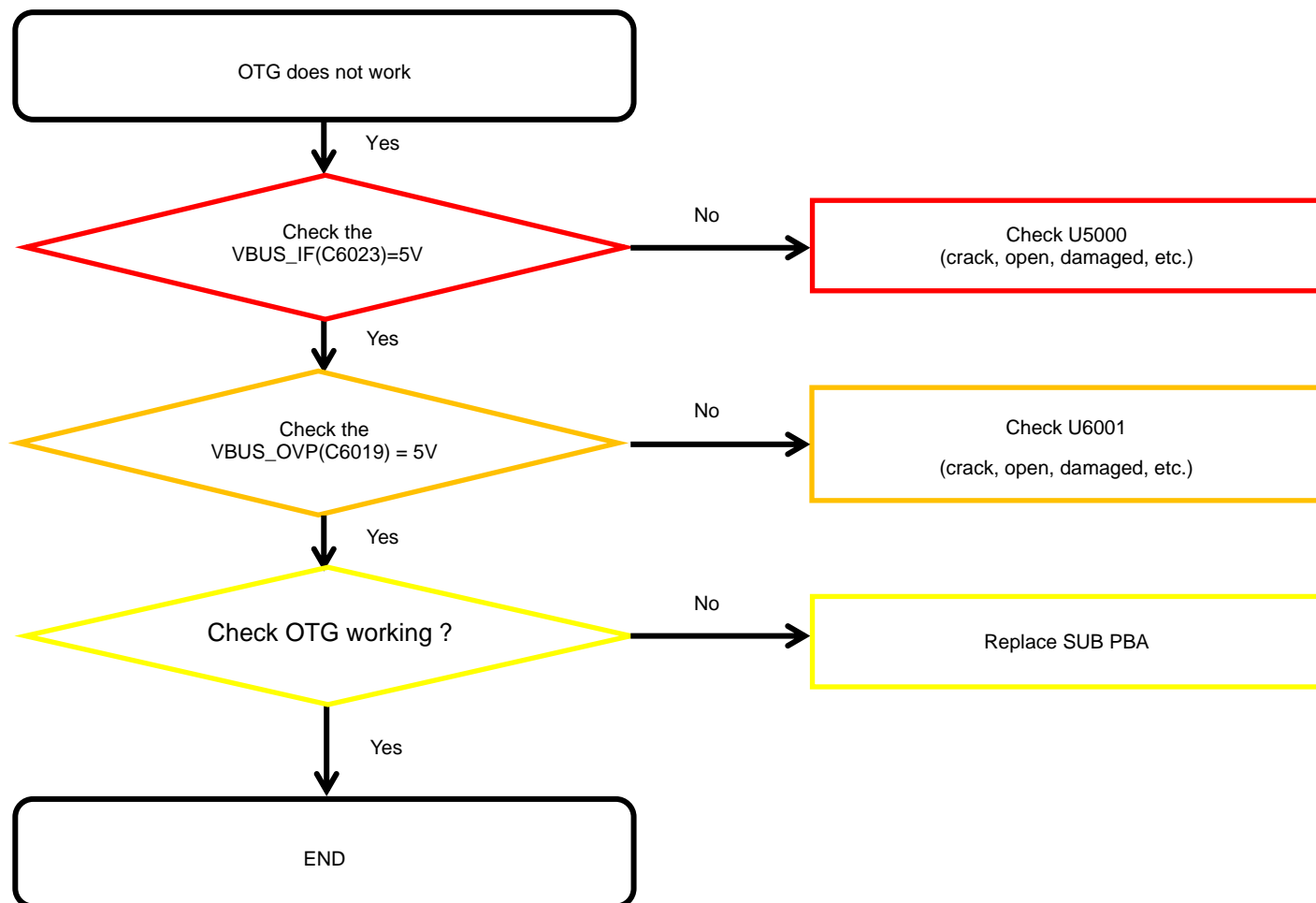
8. Level 3 Repair

8-4-6. Cable Charging Part



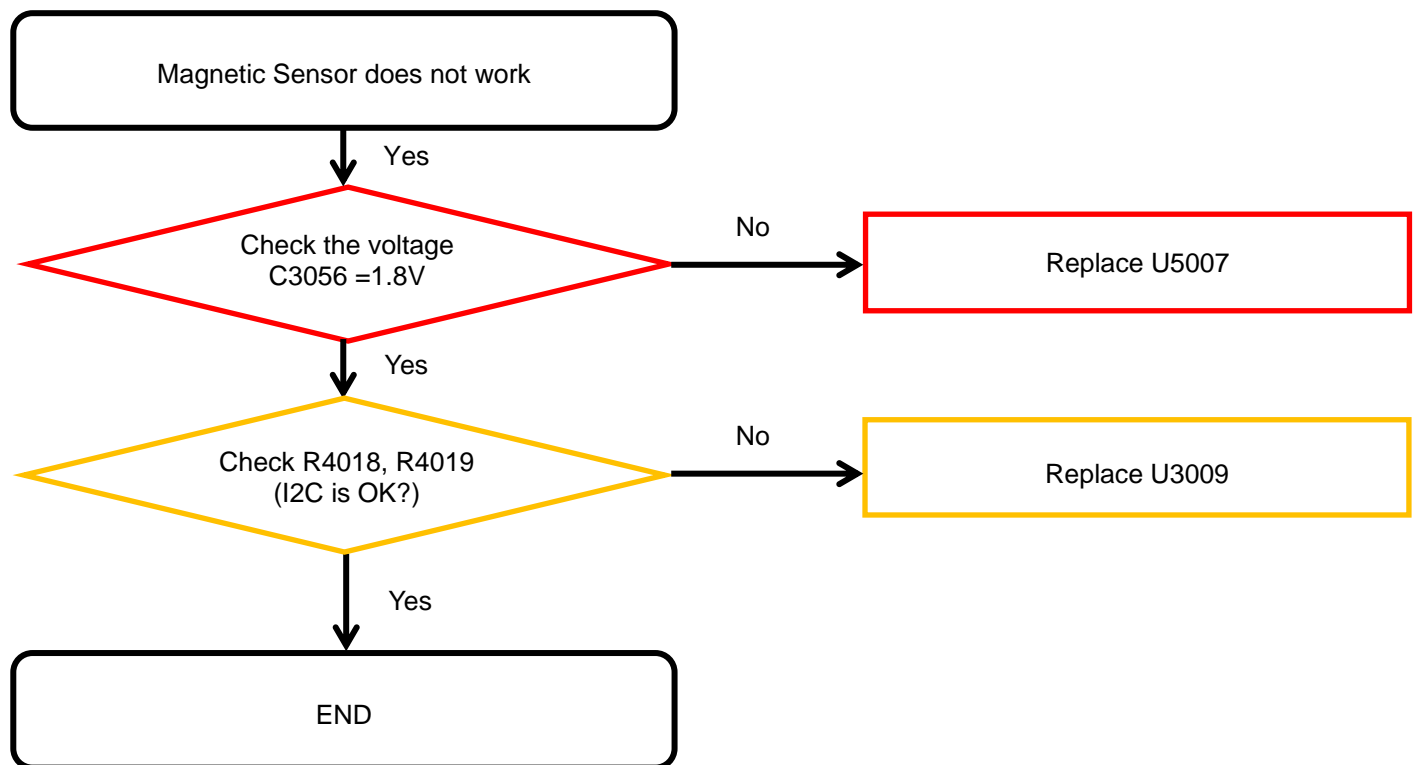
8. Level 3 Repair

8-4-7. OTG



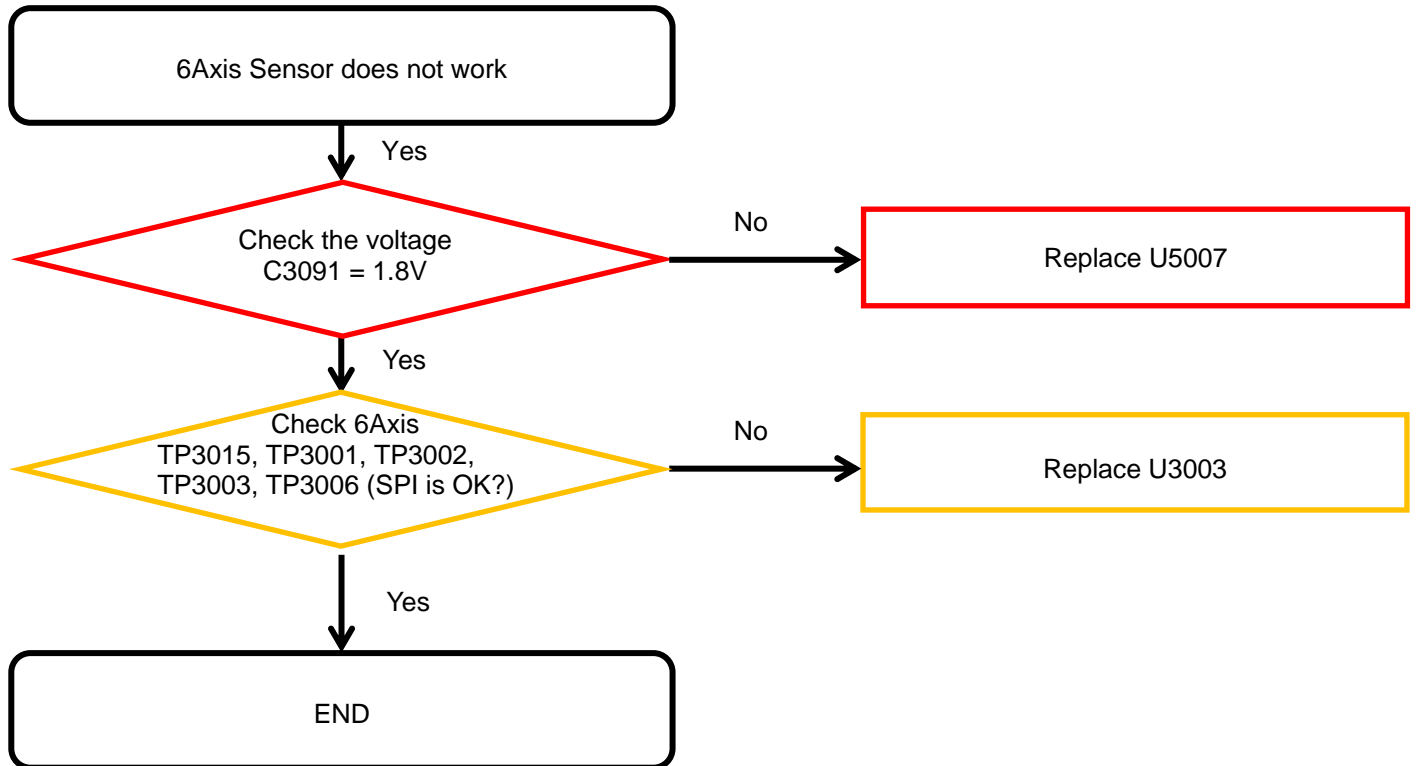
8. Level 3 Repair

8-4-8-1. Magnetic Sensor



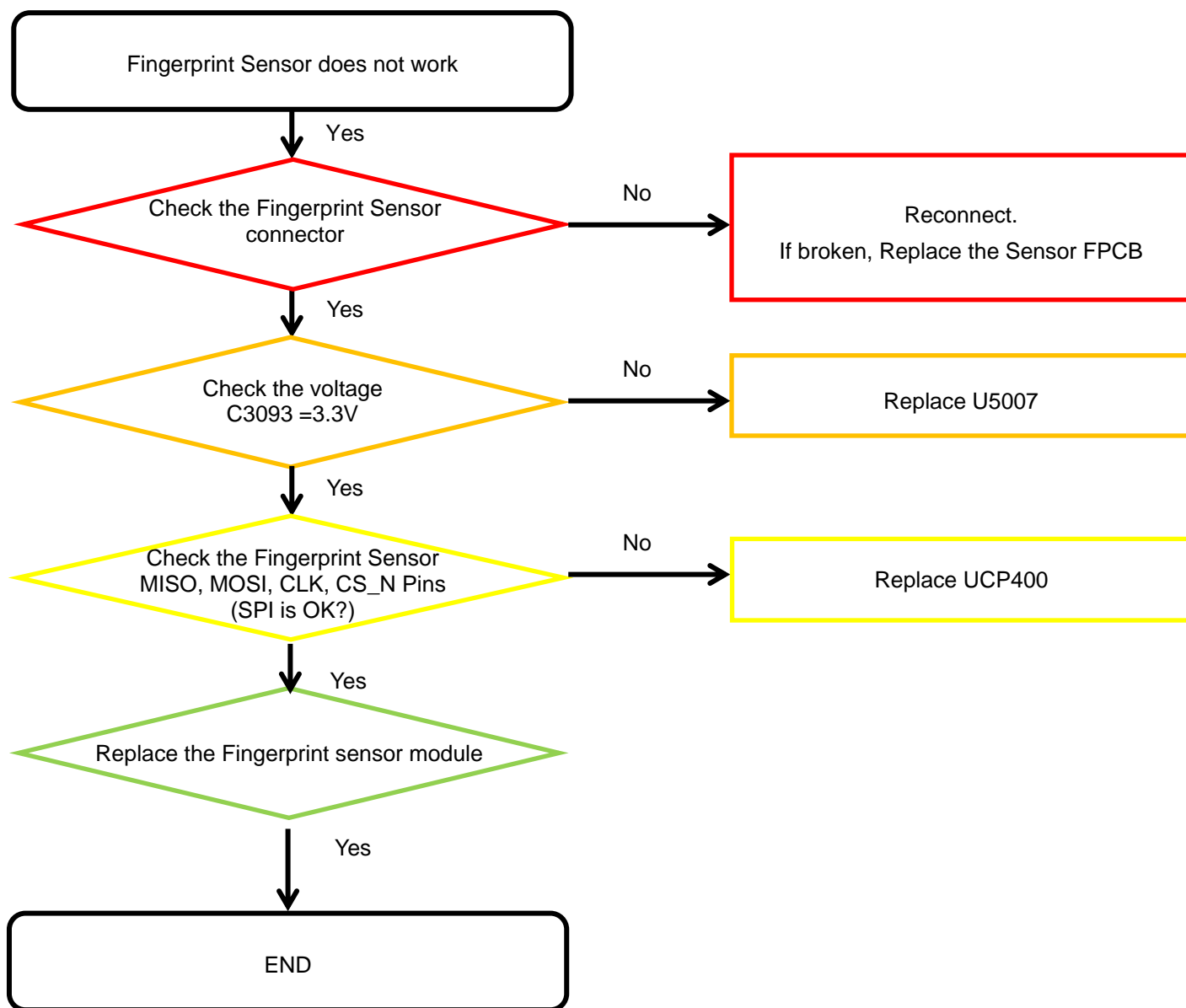
8. Level 3 Repair

8-4-8-2. 6Axis Sensor



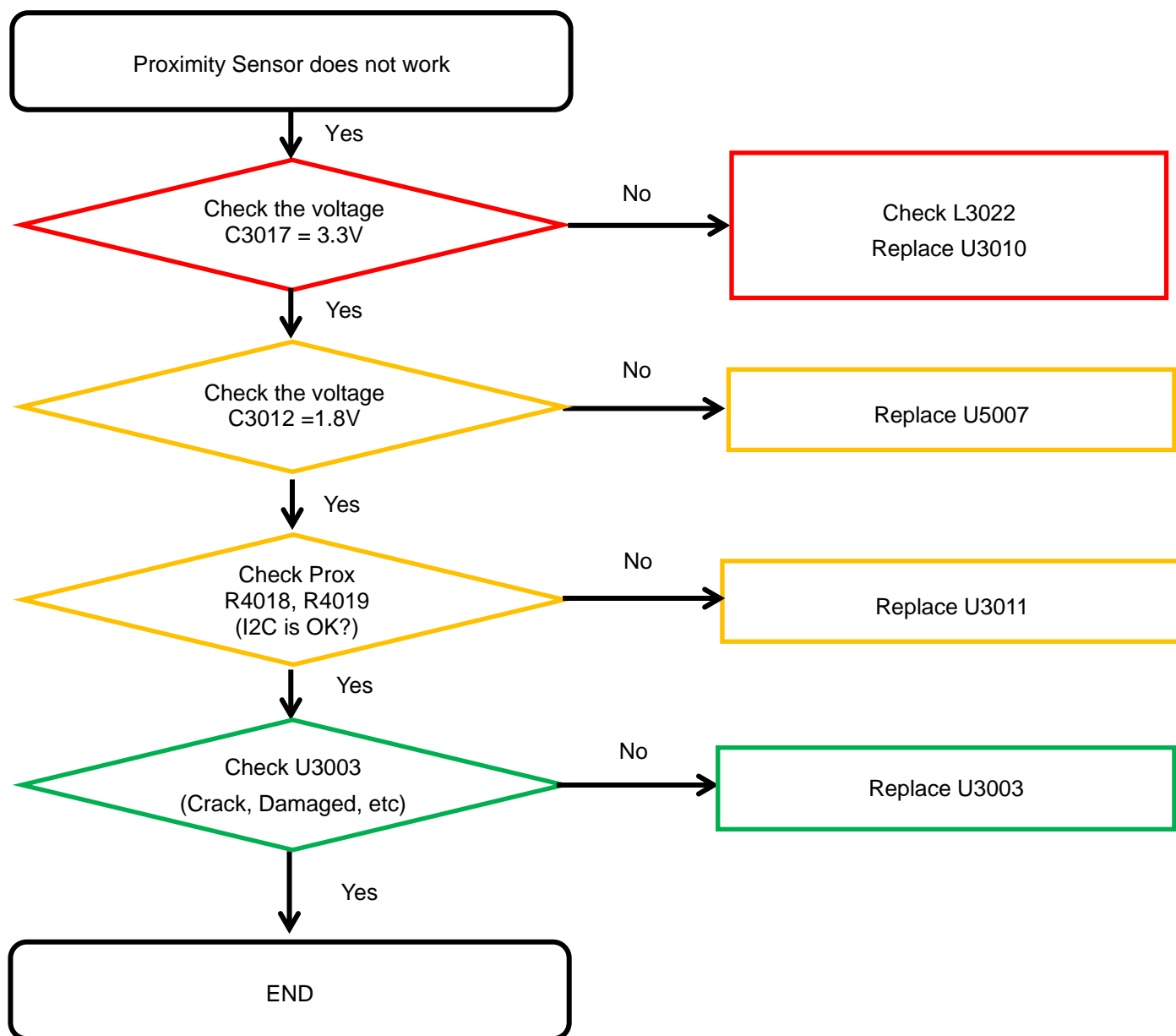
8. Level 3 Repair

8-4-8-3. Fingerprint Sensor



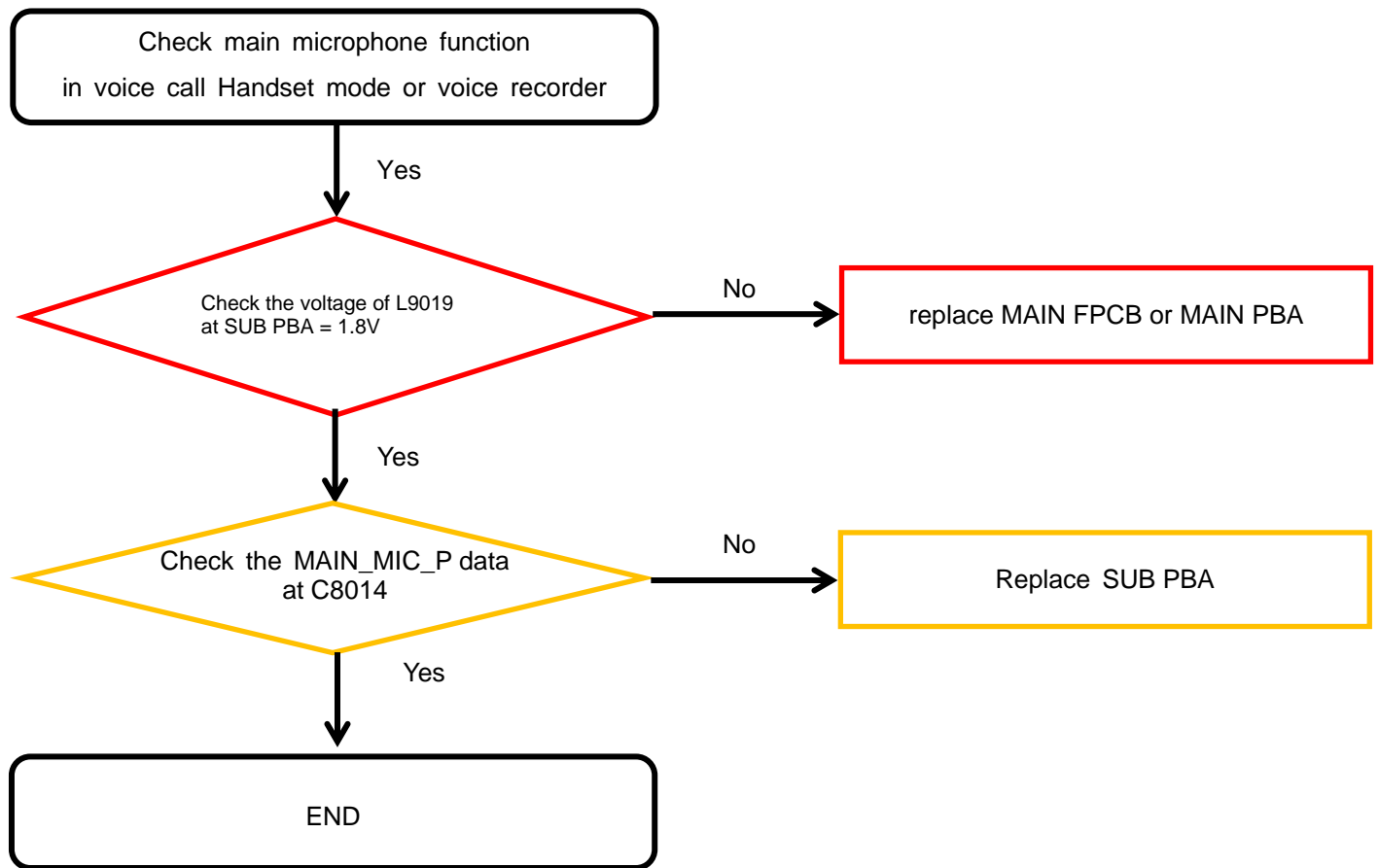
8. Level 3 Repair

8-4-8-4. Proximity / Light Sensor



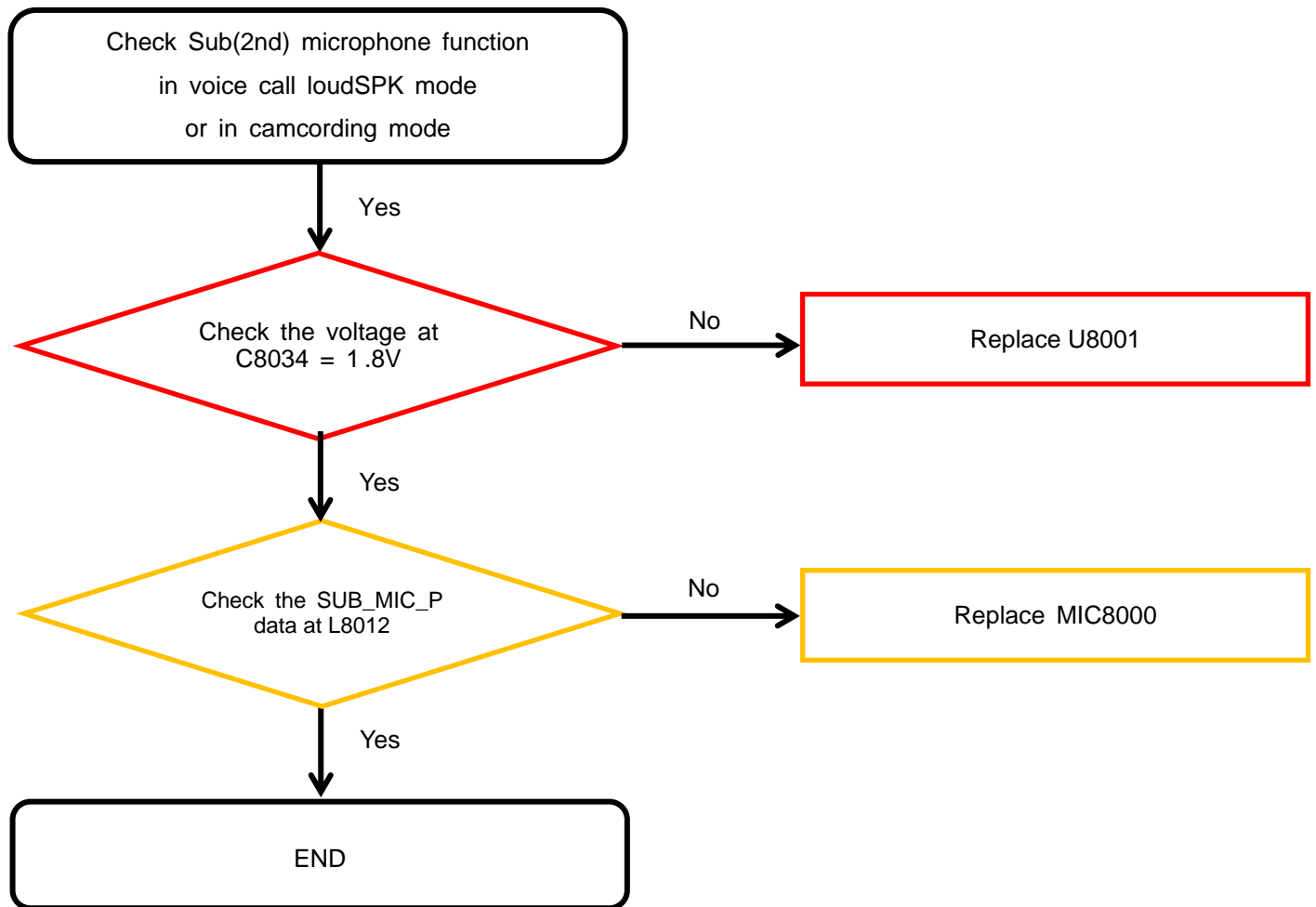
8. Level 3 Repair

8-4-9-1. Microphone Part - Main MIC



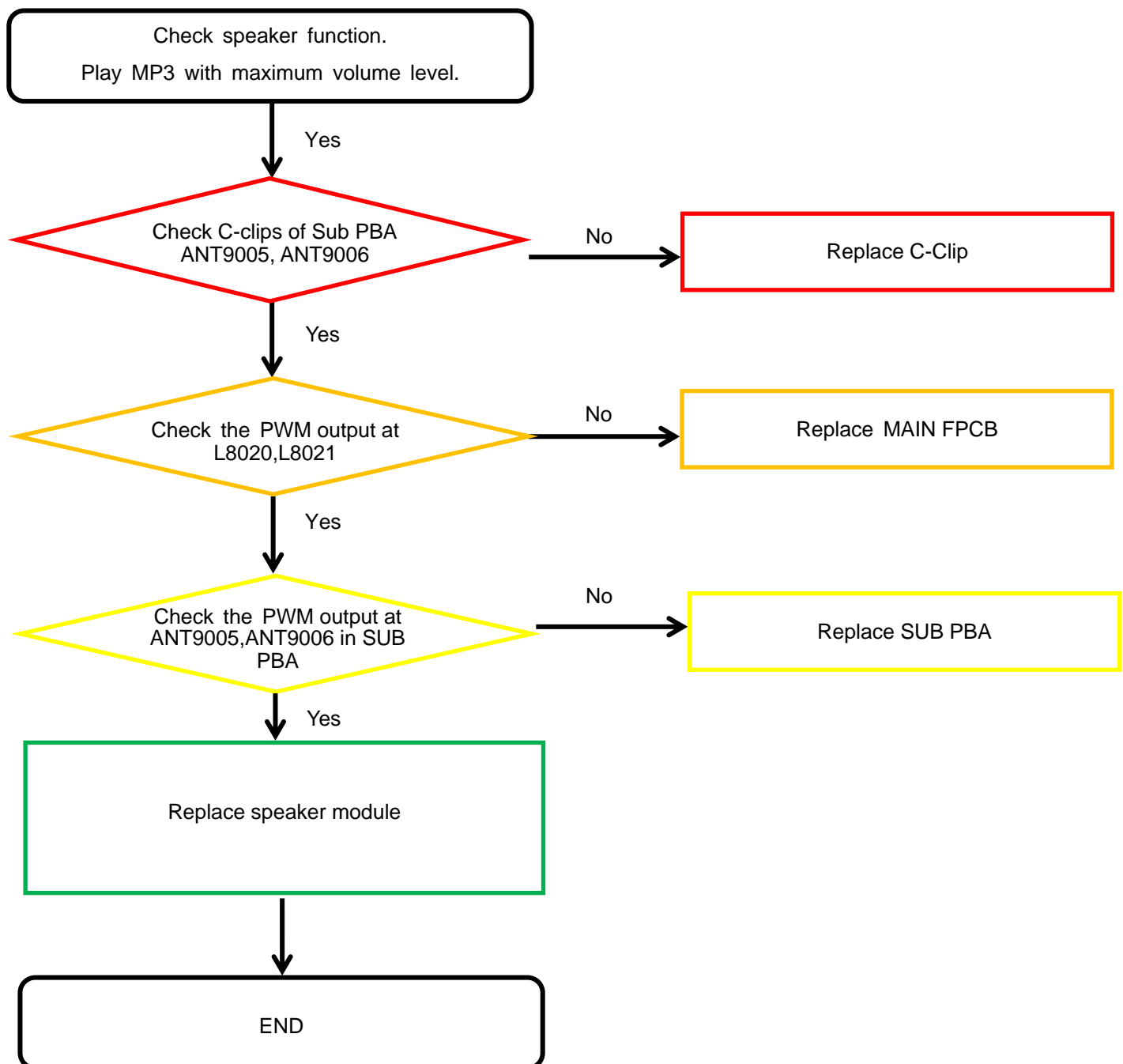
8. Level 3 Repair

8-4-9-2. Microphone Part - Sub(2nd) MIC



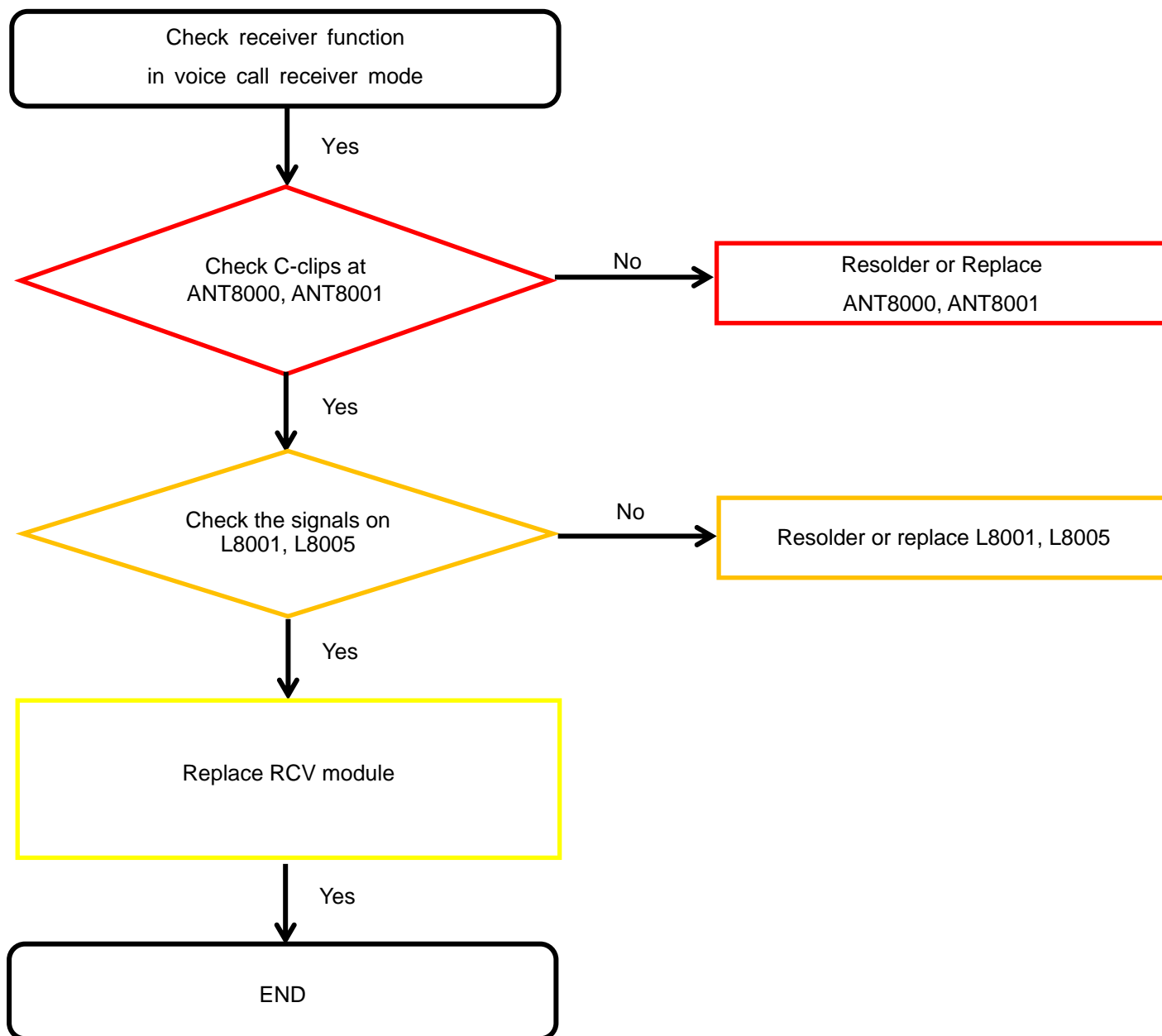
8. Level 3 Repair

8-4-10. Speaker Part



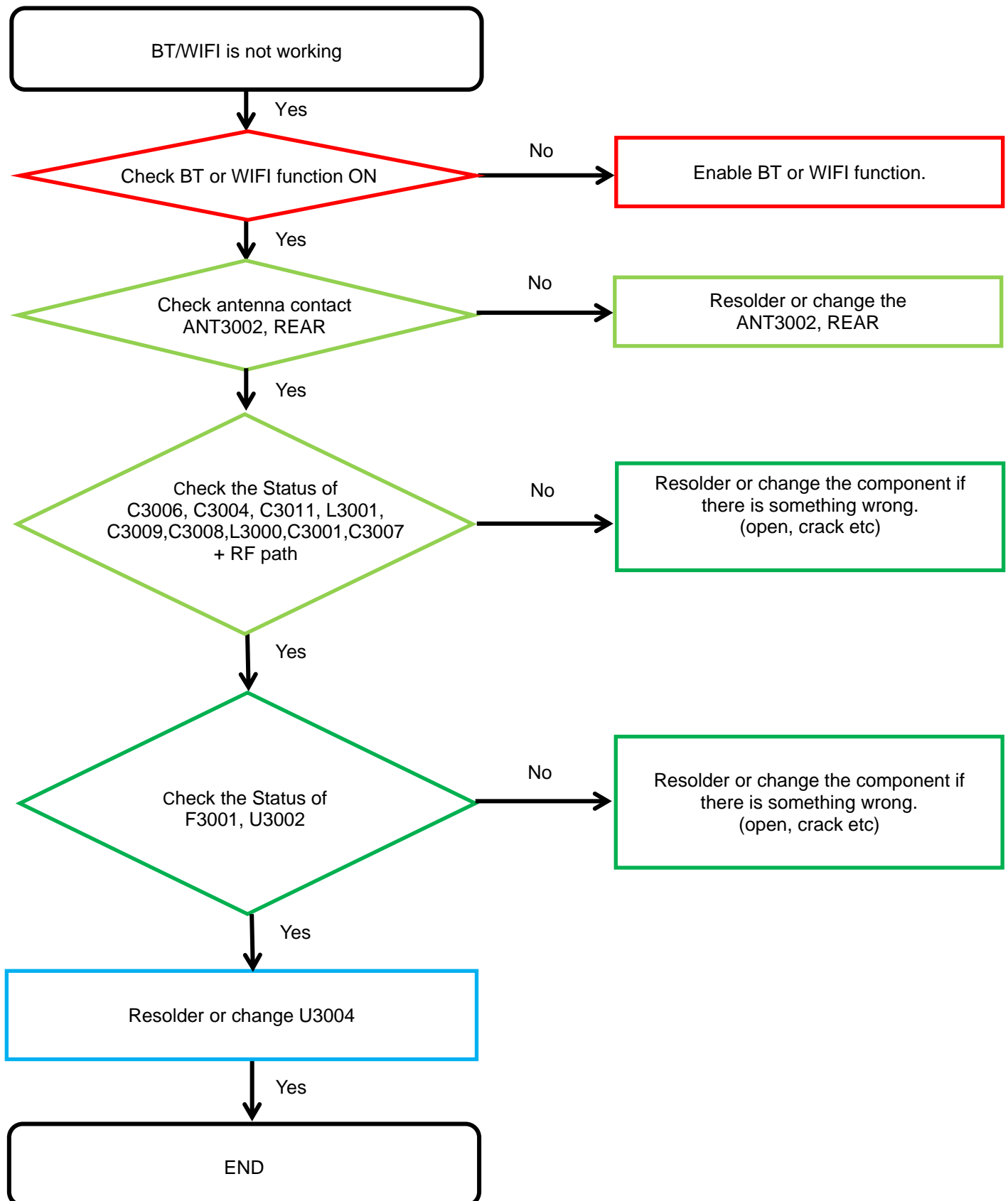
8. Level 3 Repair

8-4-11. Receiver Part



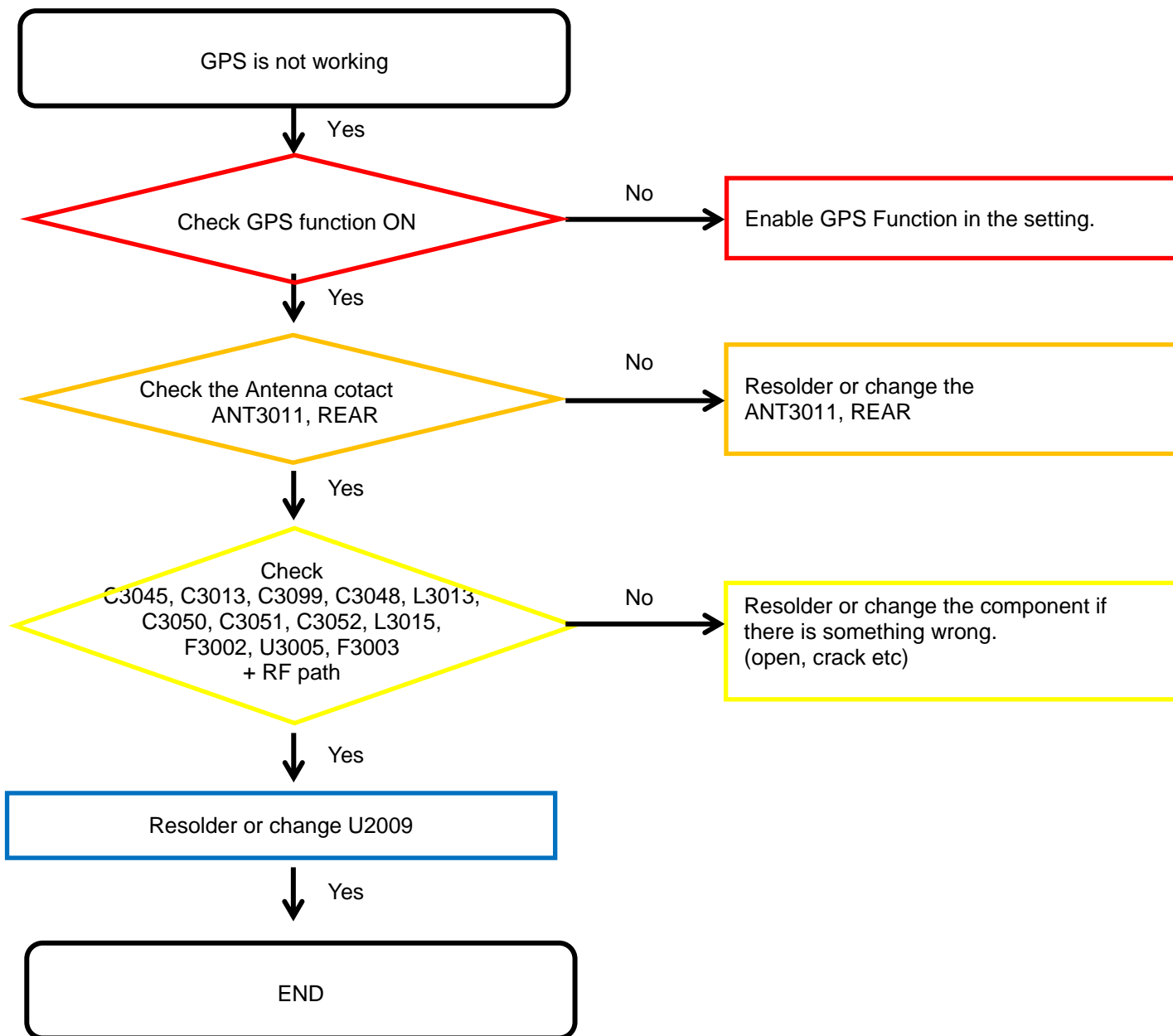
8. Level 3 Repair

8-4-12. BT/WIFI



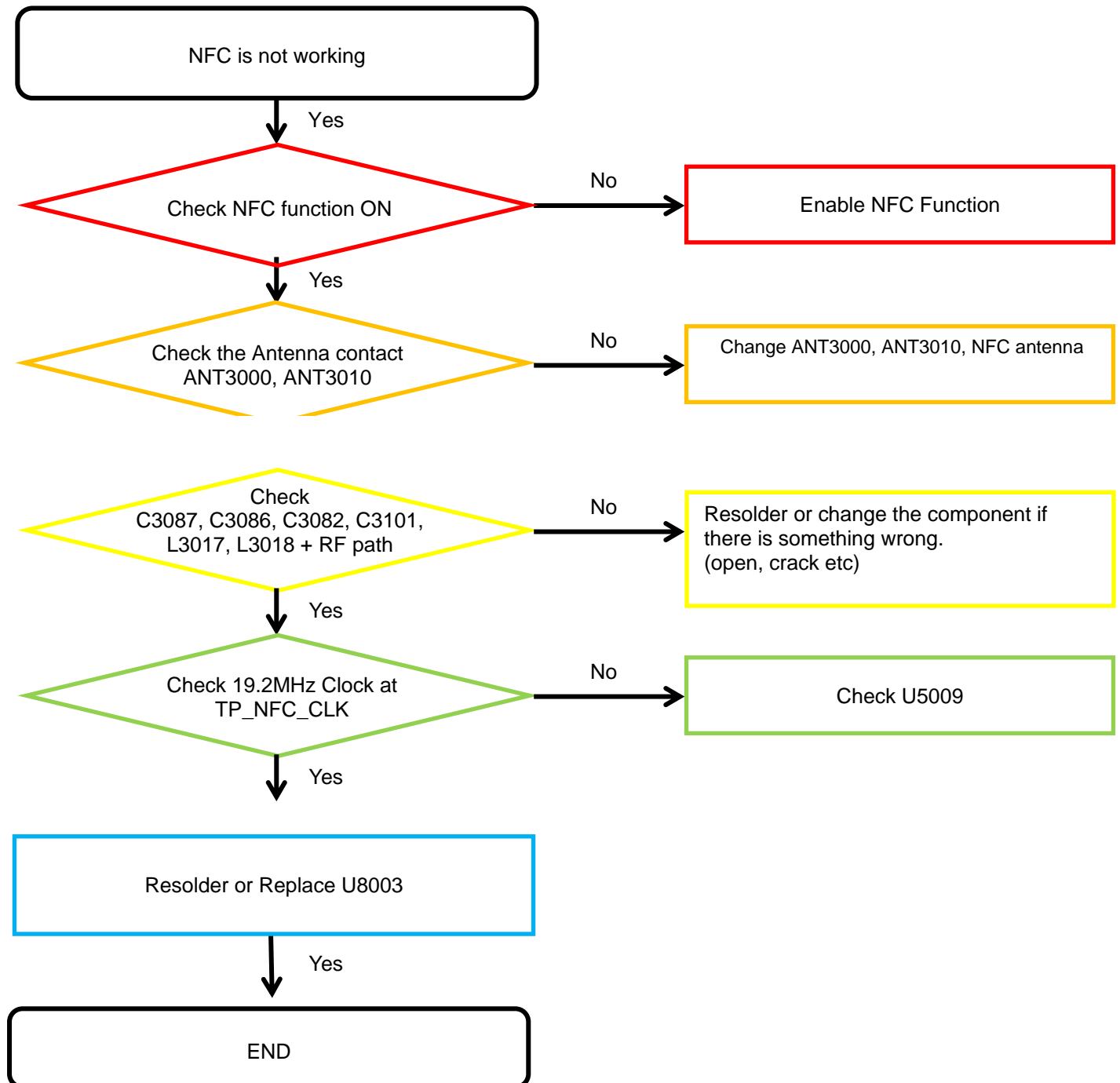
8. Level 3 Repair

8-4-13. GPS



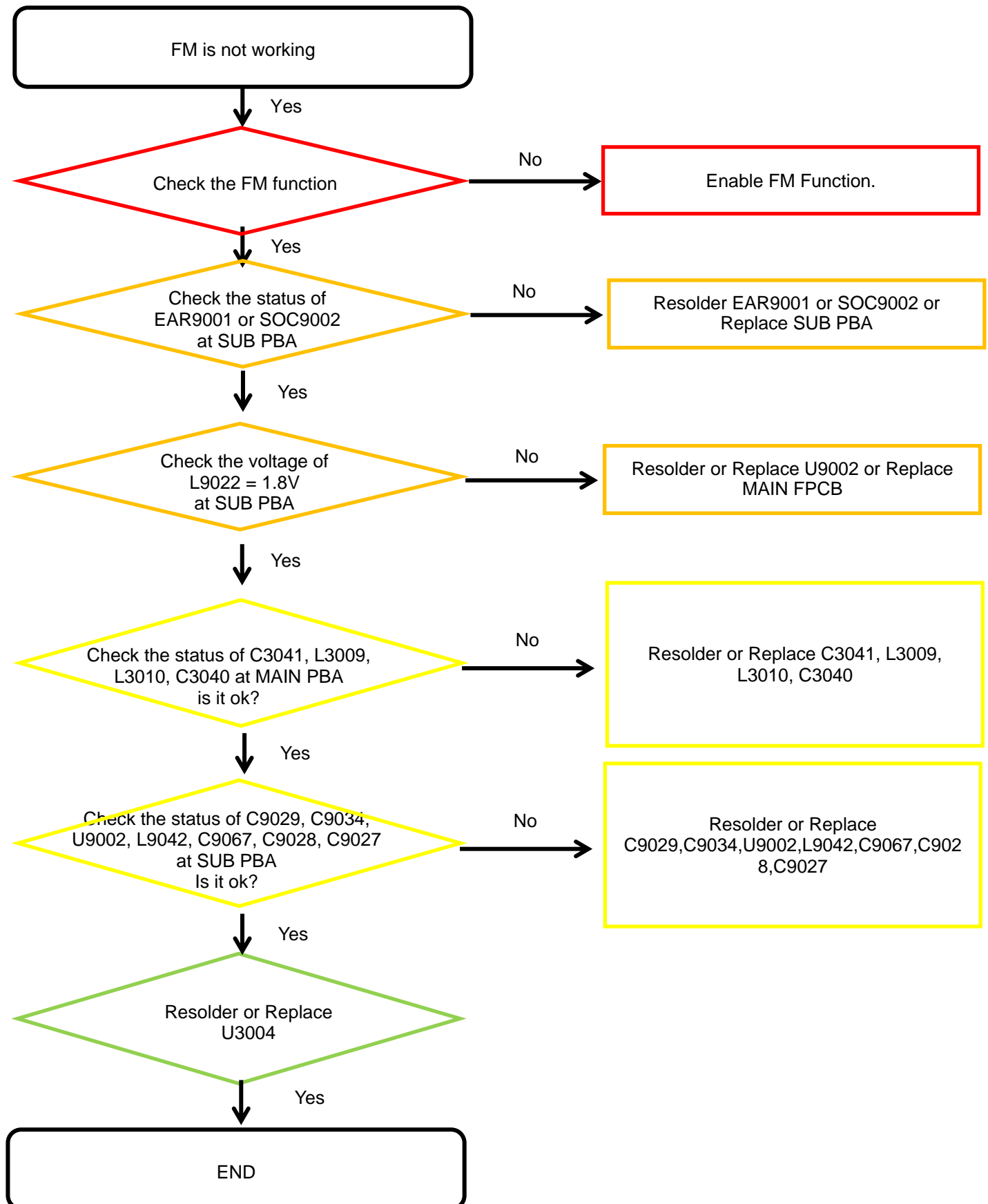
8. Level 3 Repair

8-4-14. NFC



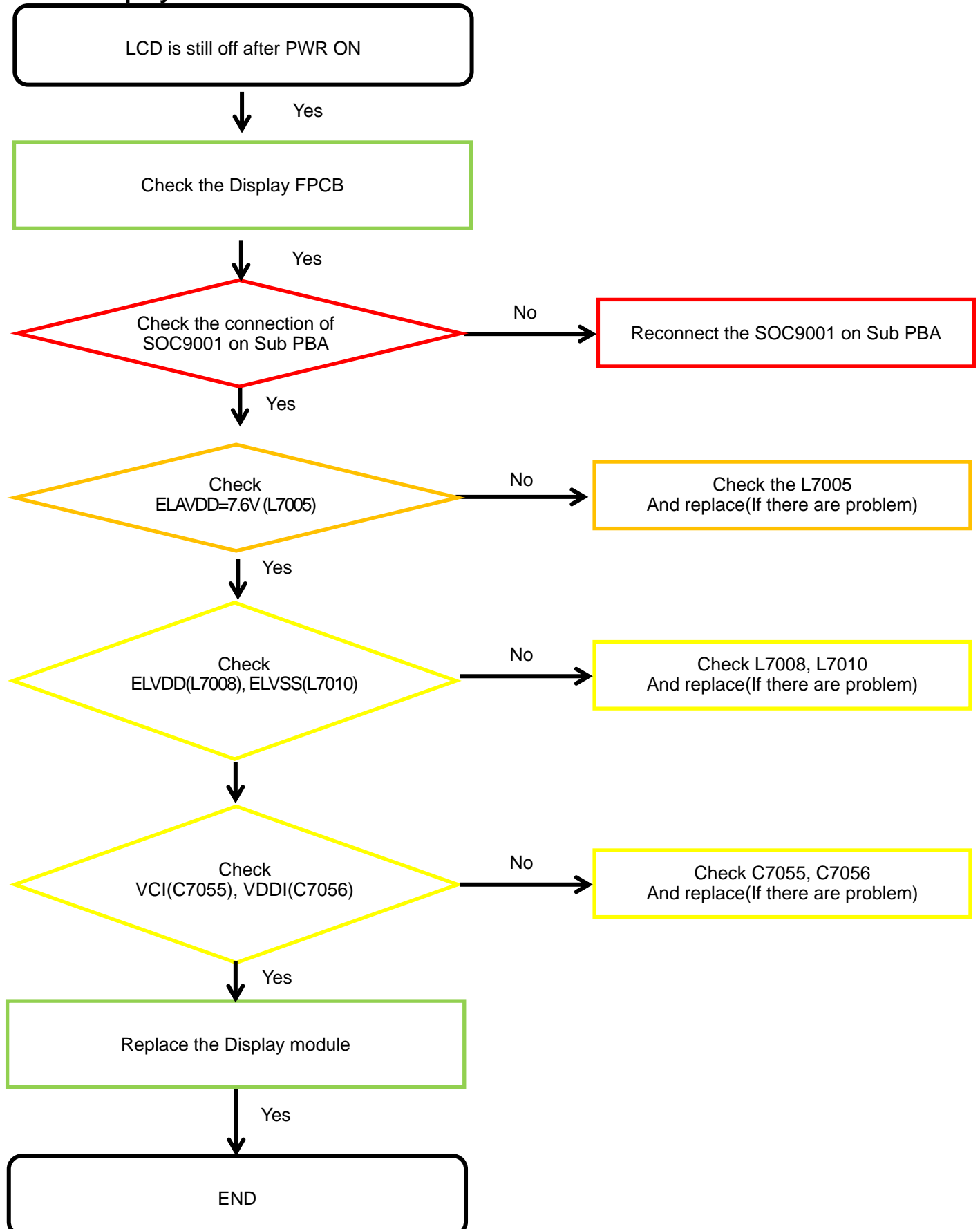
8. Level 3 Repair

8-4-15. FM radio part



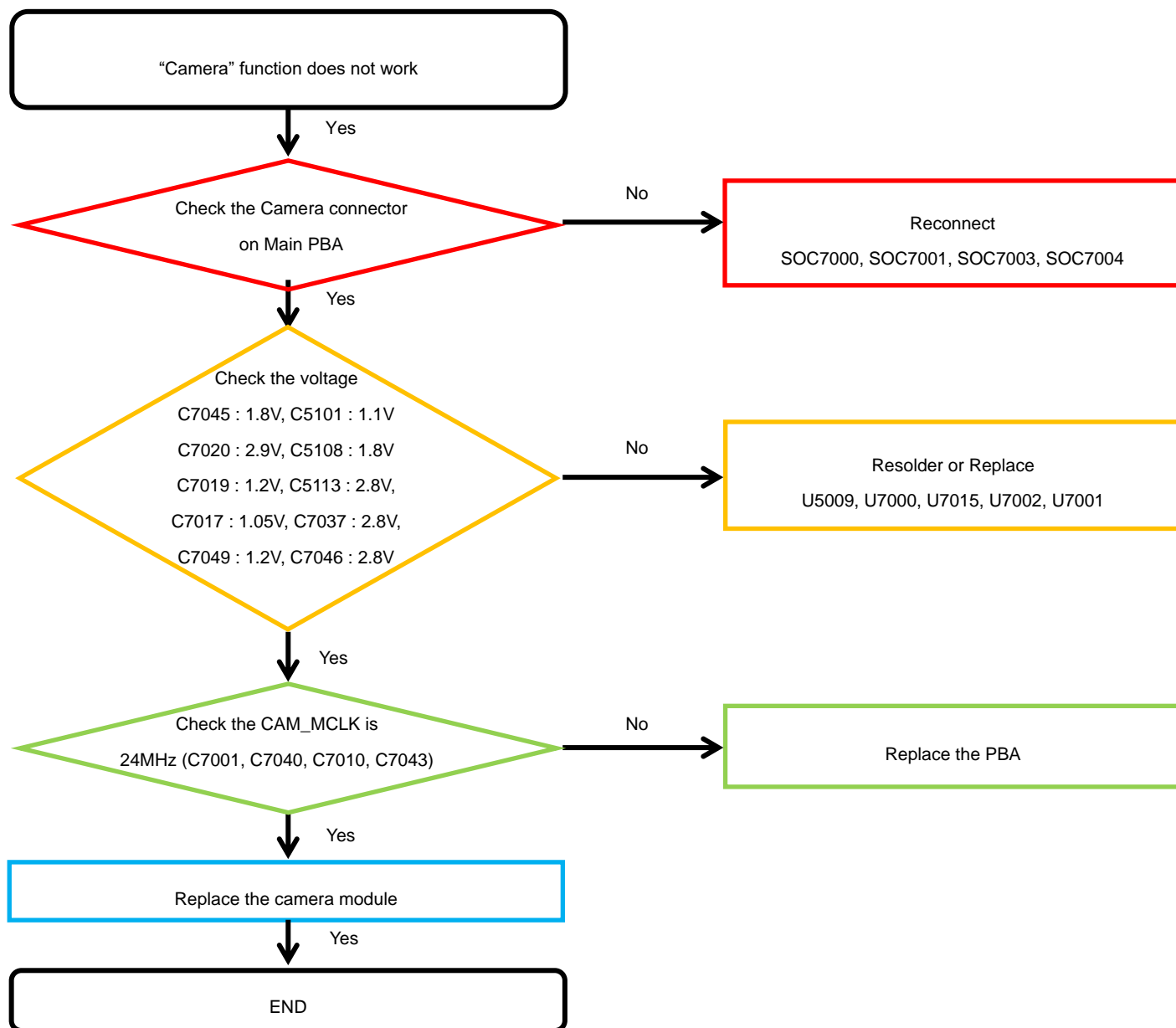
8. Level 3 Repair

8-4-16. Display



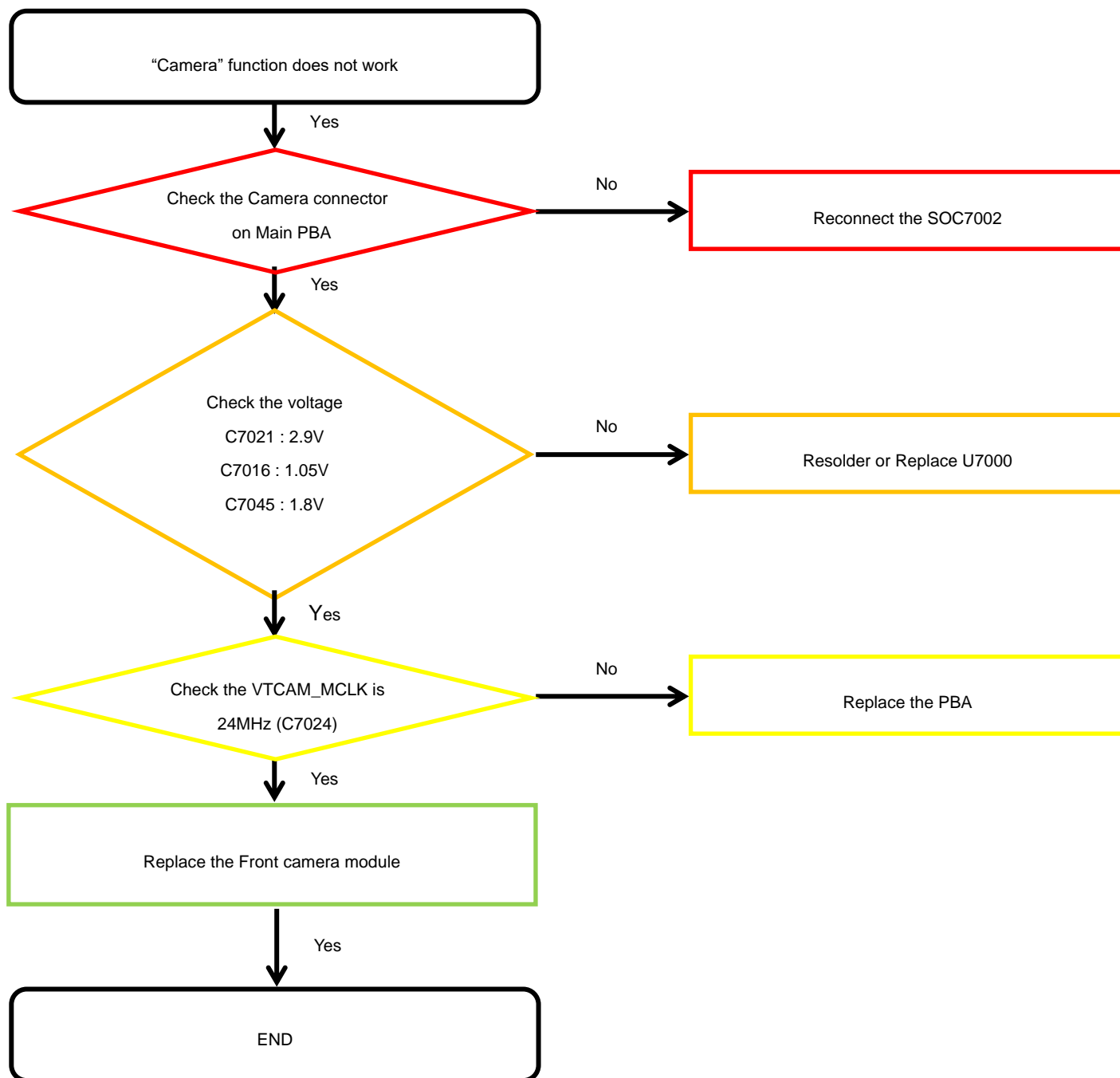
8. Level 3 Repair

8-4-17. Quad Camera



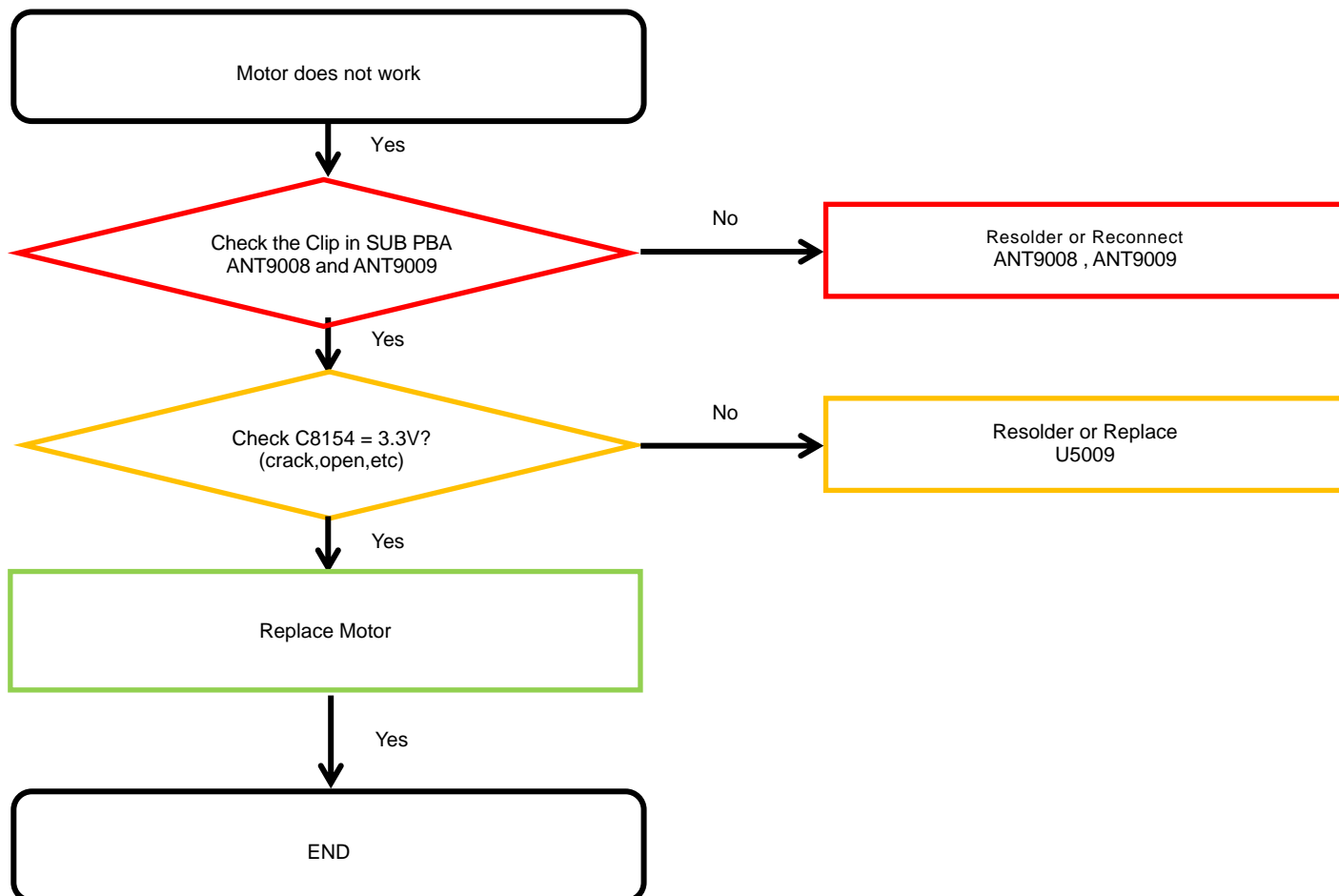
8. Level 3 Repair

8-4-18. VT CAMERA



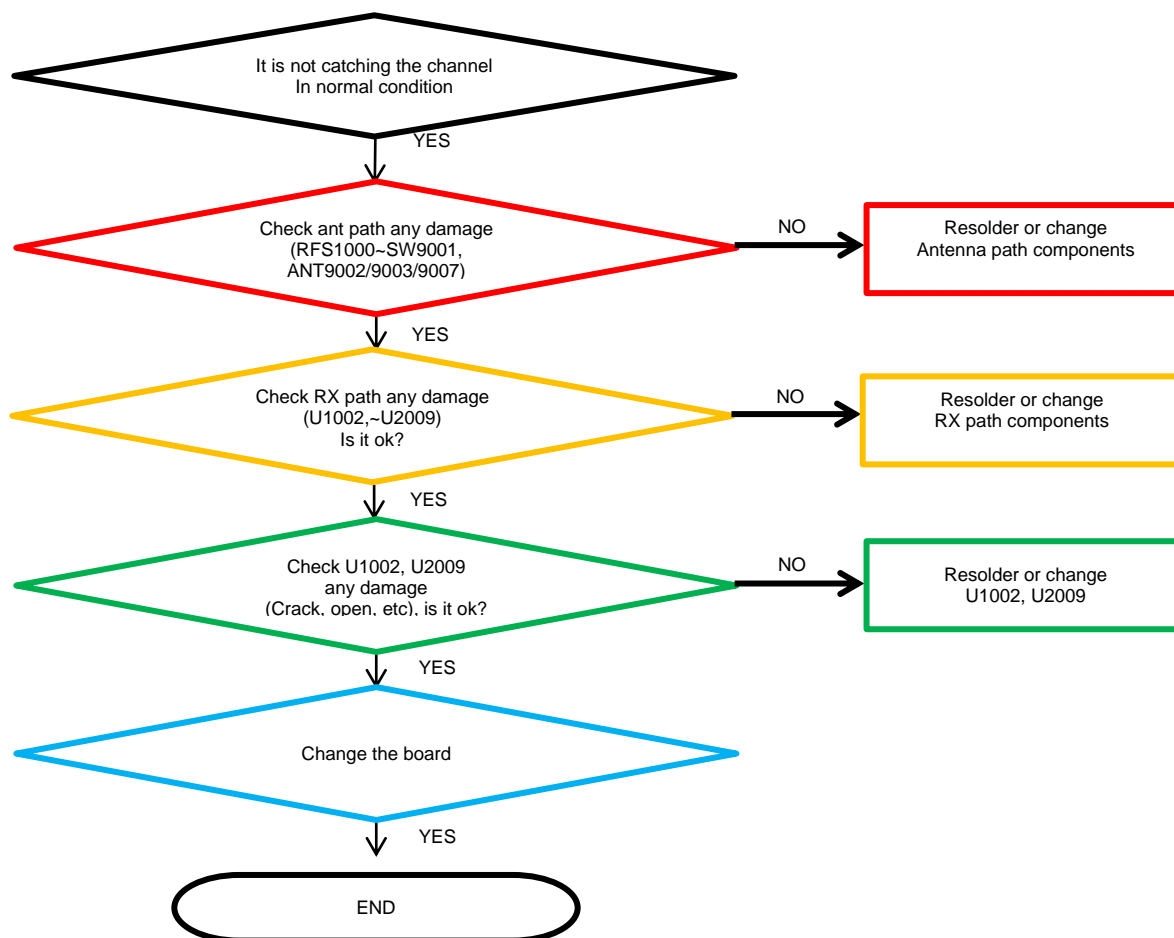
8. Level 3 Repair

8-4-19. Motor



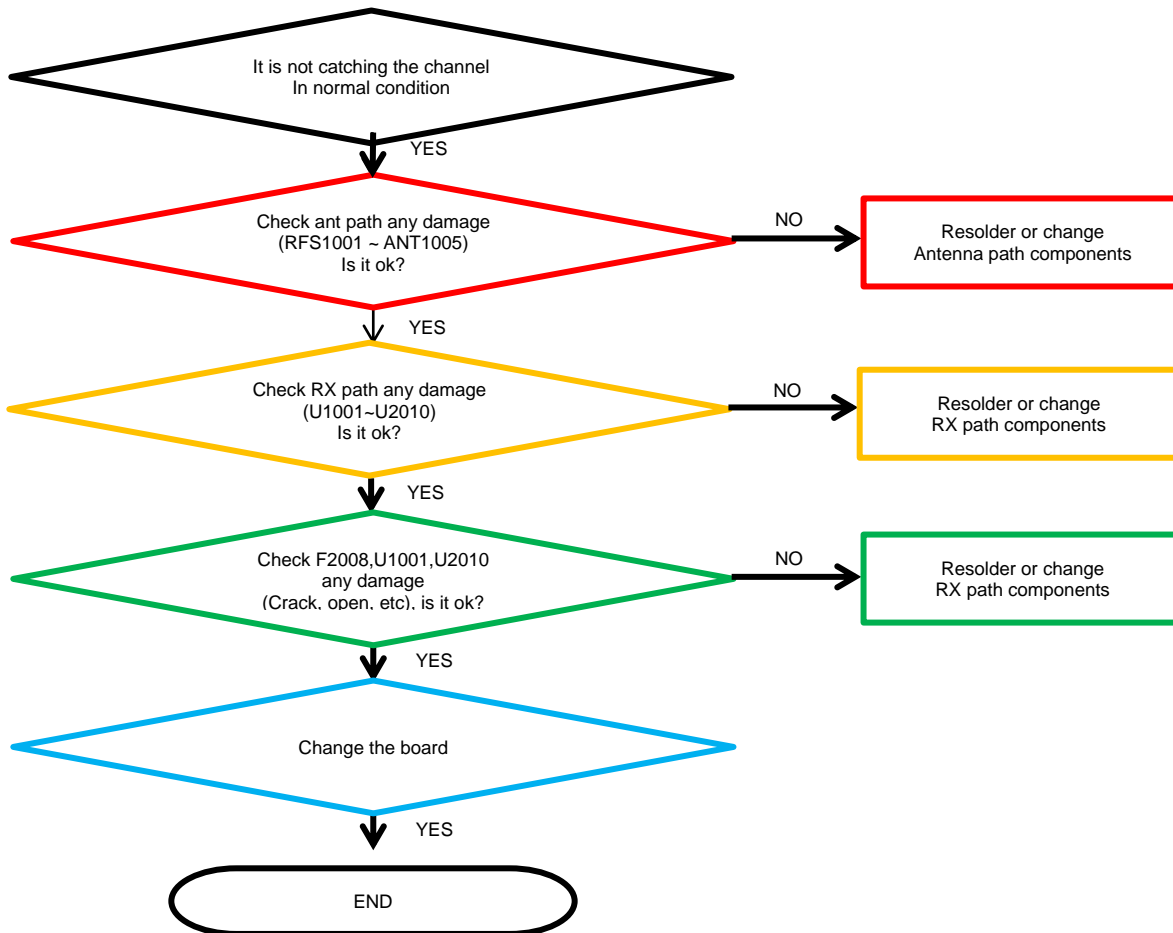
8. Level 3 Repair

8-4-20. GSM 850/900/1800/1900 WCDMA B1/2/4/5/8, LTE B1/2/3/4/5/8/12/17/20/26/28/66 PRx



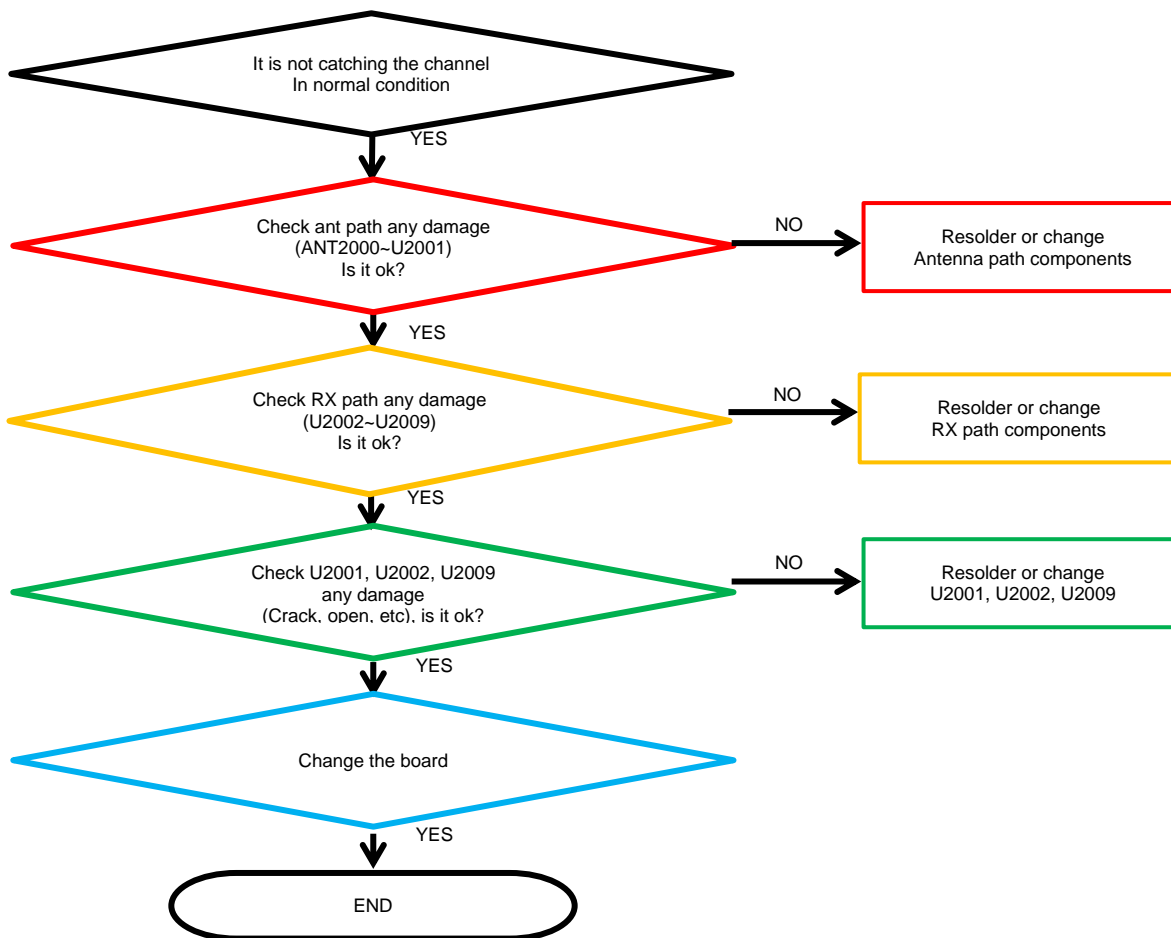
8. Level 3 Repair

8-4-21. LTE B7/ B38/B40/B41/ PRx



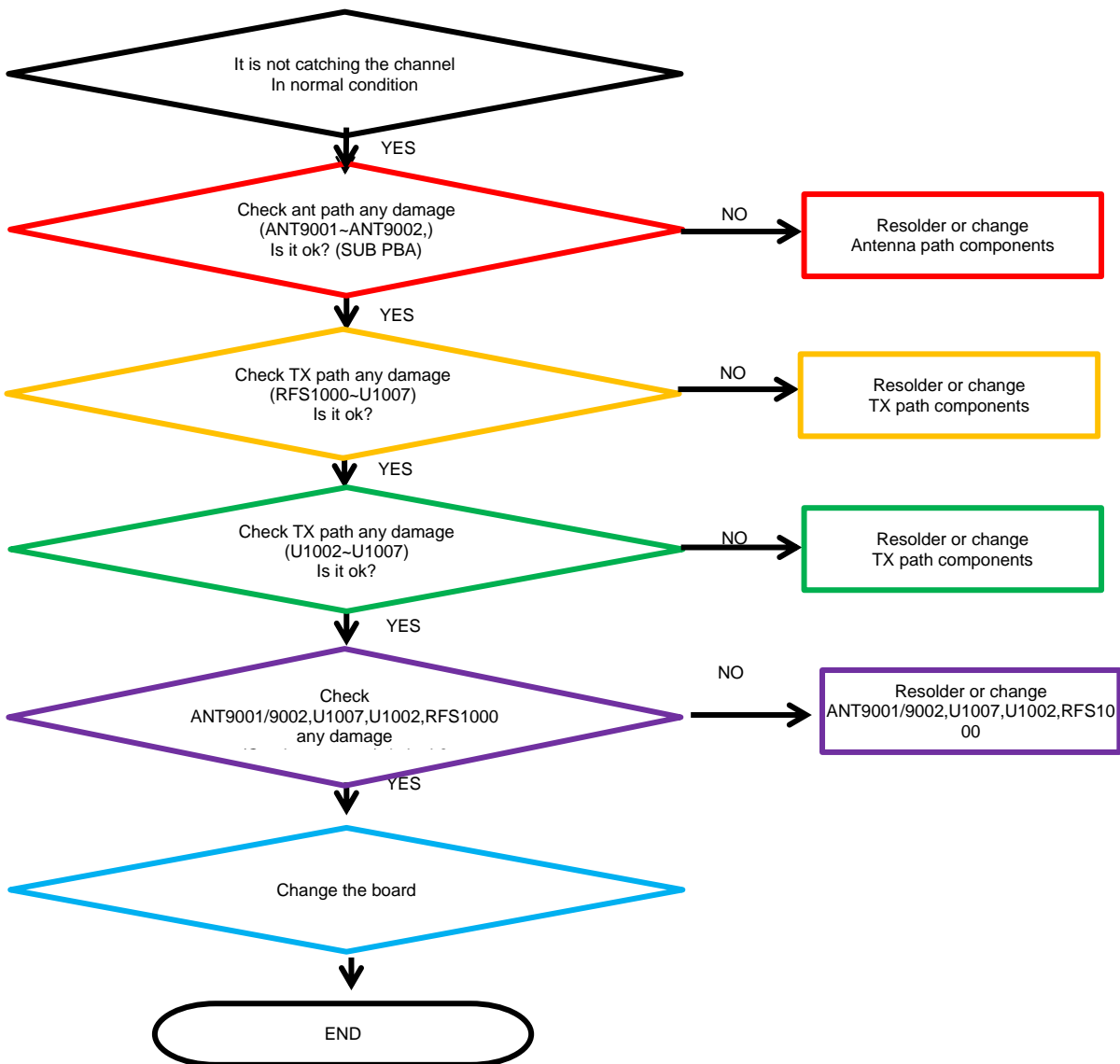
8. Level 3 Repair

8-4-22. GSM 850/900/1800/1900 WCDMA B1/2/4/5/8, LTE B1/B2/B3/B4/B5/B7/B8/B12/B17/B20/B26/B28/B38/B40/B41/B66 DRX



8. Level 3 Repair

8-4-23. GSM 850/900/1800/1900, WCDMA B1/2/4/5/8, LTE B1/B2/B3/B4/B5/B8/B12/B17/B20/B26/B28/B66 Tx



8. Level 3 Repair

8-4-24. LTE B7/38/40/41Tx

